

PENSACOLA, FLORIDA

# RNAV (GPS) RWY 19

(USN)

PENSACOLA NAS (FORREST SHERMAN FLD) (KNPA)

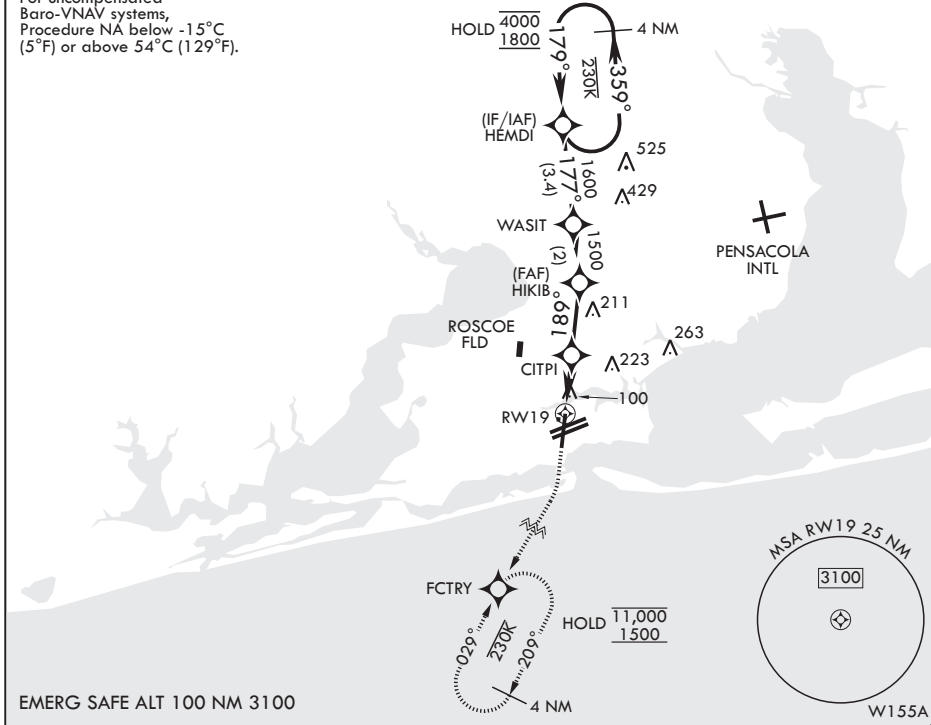
APCH CRS	Rwy Idg	7136
189°	TDZE	22
	Arprt Elev	28

RNP APCH - GPS  
 RADAR required

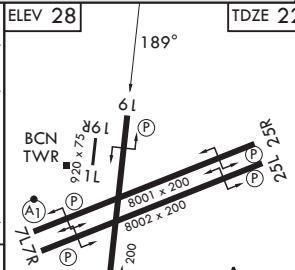
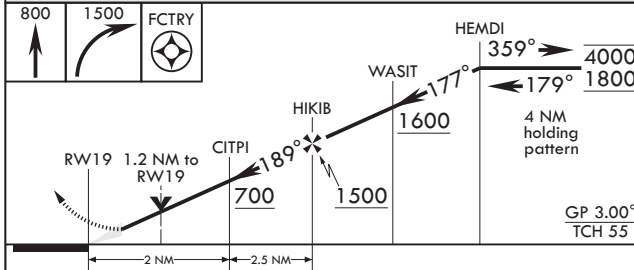
MISSED APPROACH: Climb to 800 then climbing right turn to 1500 direct FCTRY and hold.

ATIS 124.35 266.8	APP CON 120.65 270.8	SHERMAN TOWER 120.7 340.2	SHERMAN GND CON 121.7 336.4	ASR/PAR
----------------------	-------------------------	------------------------------	--------------------------------	---------

For uncompensated Baro-VNAV systems, Procedure NA below -15°C (5°F) or above 54°C (129°F).



EMERG SAFE ALT 100 NM 3100



CATEGORY	A	B	C	D	E
LNAV/VNAV DA	272-1	250 (300-1)	275-1 253 (300-1)	296-1 274 (300-1)	380-1 358 (400-1)
LNAV MDA	440-1	418 (500-1)	440-1½	418 (500-1½)	418 (500-1½)
CIRCLING	520-1	492 (500-1)	540-1½ 512 (600-1½)	600-2 572 (600-2)	640-2¼ 612 (700-2¼)

HRL Rwy 1-19, 7L-25R, and 7R-25L  
 REIL Rwy 1, 7L, 7R, 19, 25L, and 25R

PENSACOLA, FLORIDA  
 Amdt 6 12JUN25

30°21'N - 87°19'W PENSACOLA NAS (FORREST SHERMAN FLD) (KNPA)

# RNAV (GPS) RWY 19

SE-3, 19 MAR 2026 to 16 APR 2026

SE-3, 19 MAR 2026 to 16 APR 2026