

PENSACOLA, FLORIDA

TACAN Y RWY 1

TACAN NPA Chan 119	APCH CRS 015°	Rwy Idg 7136	TDZE 28	Arprt Elev 28
-----------------------	------------------	-----------------	------------	------------------

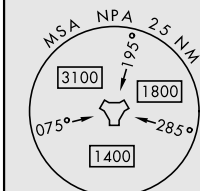
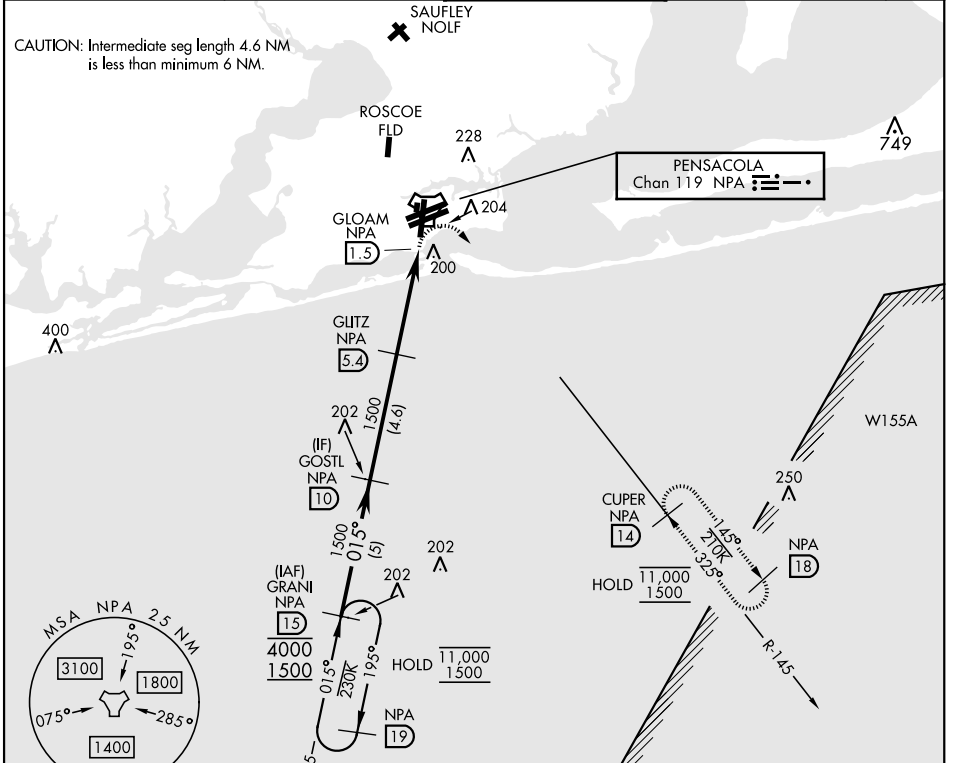
[UNSN]

PENSACOLA NAS (FORREST SHERMAN FLD) (KNPA)

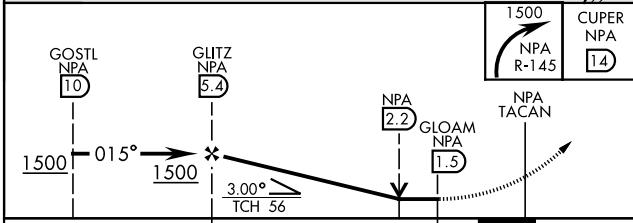
RADAR required
▼

MISSED APPROACH: Climbing right turn to 1500 via NPA TACAN R-145 to CUPER and hold.

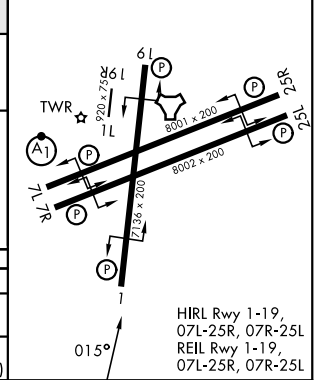
ATIS 124.35 266.8	PENSACOLA APP CON 120.65 270.8	SHERMAN TOWER 120.7 340.2	GND CON 121.7 336.4	ASR/ PAR
----------------------	-----------------------------------	------------------------------	------------------------	-------------



EMERG SAFE ALT 100 NM 3100



ELEV	28	TDZE	28
------	----	------	----



HIRL Rwy 1-19, 07L-25R, 07R-25L
REIL Rwy 1-19, 07L-25R, 07R-25L

SE-3, 19 MAR 2026 to 16 APR 2026

SE-3, 19 MAR 2026 to 16 APR 2026

PENSACOLA, FLORIDA

30°21'N-87°19'W

PENSACOLA NAS (FORREST SHERMAN FLD) (KNPA)

Amdt 1 12JUN25

TACAN Y RWY 1