

TACAN Y RWY 19

TACAN NPA Chan 119	APCH CRS 182°	Rwy Idg TDZE Arprt Elev	7136 22 28
------------------------------	-------------------------	-------------------------------	---------------------------------------

[USN]

PENSACOLA NAS (FORREST SHERMAN FLD) (KNPA)

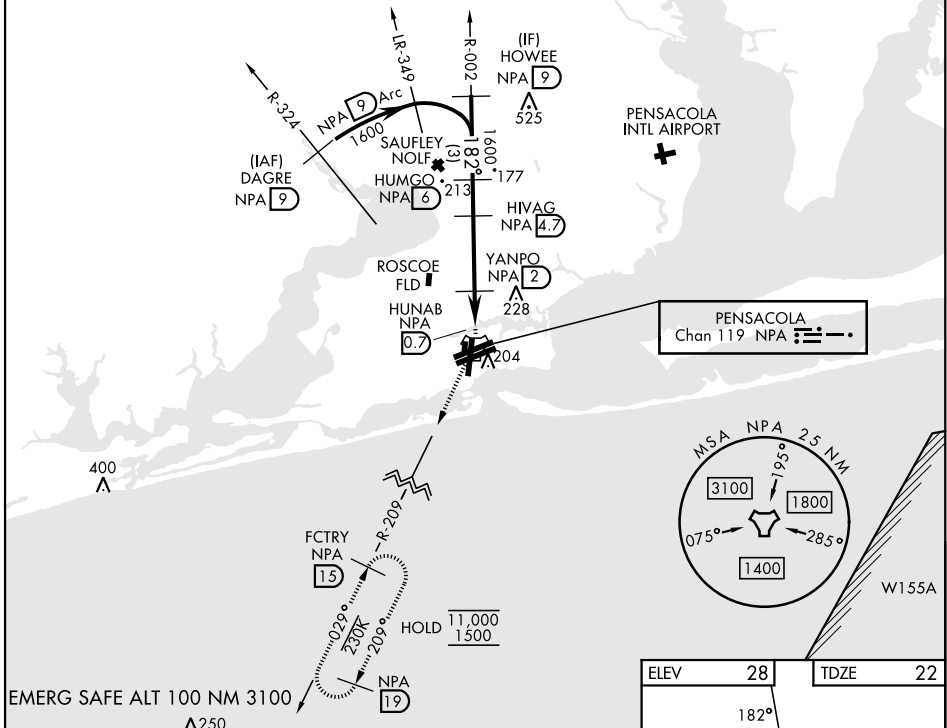
RADAR required
▼

MISSED APPROACH: Climbing right turn to 1500 via NPA TACAN R-209 to FCTRY and hold.

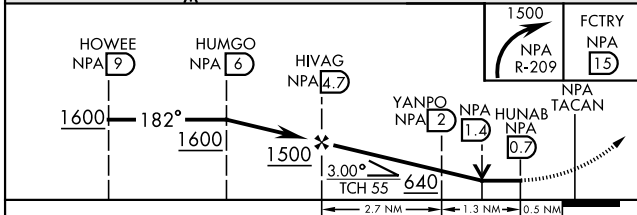
ATIS 124.35 266.8	PENSACOLA APP CON 120.65 270.8	SHERMAN TOWER 120.7 340.2	GND CON 121.7 336.4	ASR/ PAR
-----------------------------	--	-------------------------------------	-------------------------------	-------------

CAUTION: Intermediate seg len 4.3 NM is less than minimum 6 NM.

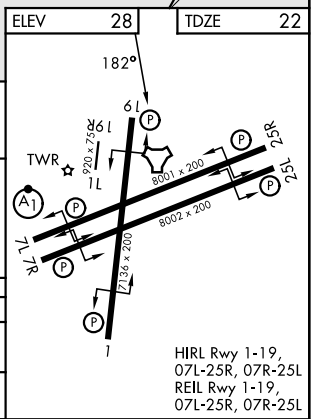
The final apch course is 427' from rwy centerline at 3000' from thld.



EMERG SAFE ALT 100 NM 3100
▲250



CATEGORY	A	B	C	D	E
S-19	440-1	418 (500-1)	440-1½	418 (500-1½)	
CIRCLING	520-1	492 (500-1)	540-1½ 512 (600-1½)	600-2 572 (600-2)	640-2¼ 612 (700-2¼)



HIRL Rwy 1-19, 07L-25R, 07R-25L
REIL Rwy 1-19, 07L-25R, 07R-25L

TACAN Y RWY 19

SE-3, 19 MAR 2026 to 16 APR 2026

SE-3, 19 MAR 2026 to 16 APR 2026