

TACAN Y RWY 25L

TACAN NPA Chan 119	APCH CRS 266°	Rwy Idg TDZE Arprt Elev	8002 22 28
------------------------------	-------------------------	-------------------------------	---------------------------------------

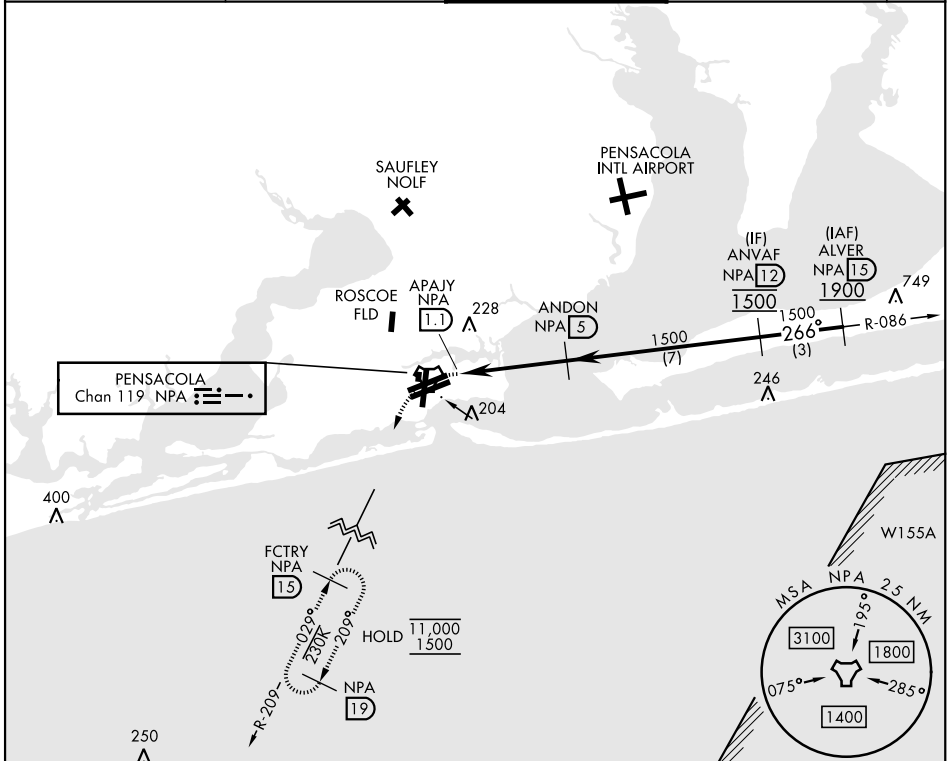
[USN]

PENSACOLA NAS (FORREST SHERMAN FLD) (KNPA)

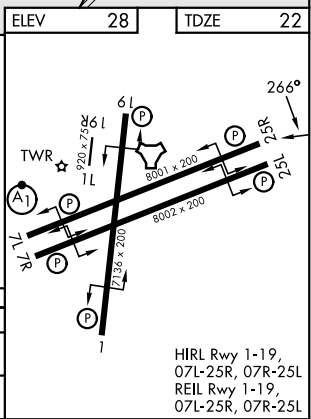
RADAR required

MISSED APPROACH: Climbing left turn to 1500 via NPA TACAN R-209 to FCTRY and hold.

ATIS 124.35 266.8	PENSACOLA APP CON 120.65 270.8	SHERMAN TOWER 120.7 340.2	GND CON 121.7 336.4	ASR/ PAR
-----------------------------	--	-------------------------------------	-------------------------------	-------------



EMERG SAFE ALT 100 NM 3100				
1500 NPA R-209		FCTRY NPA (15)		
NPA TACAN		ANDON NPA (5)		
APAJY NPA (1.1)		ANVAF NPA (12)		
APAJY NPA (1.8)		ANDON NPA (5)		
3.07° TCH 52		1500		
0.5		3.9 NM		
CATEGORY	A	B	C	E
S-25L	460-1	438 (500-1)	460-1¼ 438 (500-1¼)	
CIRCLING	520-1	492 (500-1)	540-1½ 512 (600-1½)	640-2¼ 612 (700-2¼)



HIRL Rwy 1-19, 07L-25R, 07R-25L
REIL Rwy 1-19, 07L-25R, 07R-25L

SE-3, 19 MAR 2026 to 16 APR 2026

SE-3, 19 MAR 2026 to 16 APR 2026

TACAN Y RWY 25L