

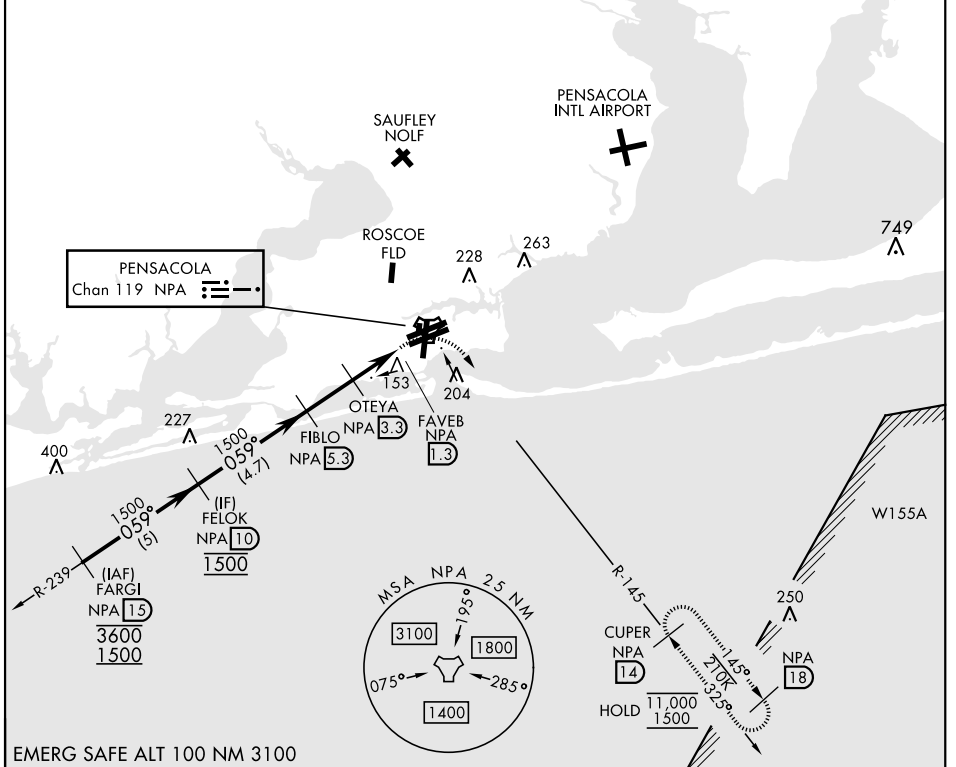
TACAN Y RWY 7R

TACAN NPA Chan 119	APCH CRS 059°	Rwy Idg TDZE Arprt Elev 8002 25 28	[USN]	PENSACOLA NAS (FORREST SHERMAN FLD) (KNPA)
-----------------------	-------------------------	--	-------	--

RADAR required	MISSED APPROACH: Climbing right turn to 1500 via NPA TACAN R-145 to CUPER and hold.
----------------	---

ATIS 124.35 266.8	PENSACOLA APP CON 120.65 270.8	SHERMAN TOWER 120.7 340.2	GND CON 121.7 336.4	ASR/ PAR
-----------------------------	--	-------------------------------------	-------------------------------	-------------

CAUTION: Intmed segment length 4.7 NM is less than the minimum 6 NM.



EMERG SAFE ALT 100 NM 3100

	1500		CUPER NPA 14		ELEV 28	TDZE 25
	FELOK NPA 10	FIBLO NPA 5.3	OTEYA NPA 3.3	FAVEB NPA 1.3	NPA TACAN	
	1500		860		TWR	
	059°		2.98° TCH 54		8011 x 200	
	1500		2 NM		8092 x 200	
	1500		0.5		7136 x 200	
CATEGORY	A	B	C	D	E	
S-7R	440-1	415 (500-1)	440-1½	415 (500-1½)		HIRL Rwy 1-19, 07L-25R, 07R-25L
CIRCLING	520-1	492 (500-1)	540-1½ 512 (600-1½)	600-2 572 (600-2)	640-2¼ 612 (700-2¼)	REIL Rwy 1-19, 07L-25R, 07R-25L

TACAN Y RWY 7R

SE-3, 19 MAR 2026 to 16 APR 2026

SE-3, 19 MAR 2026 to 16 APR 2026