

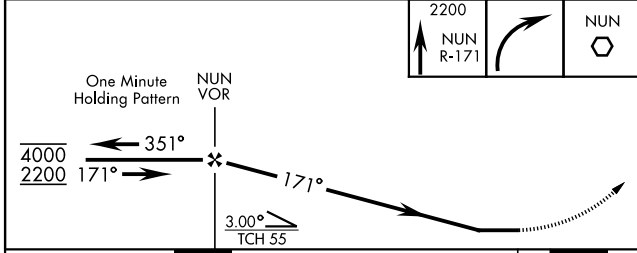
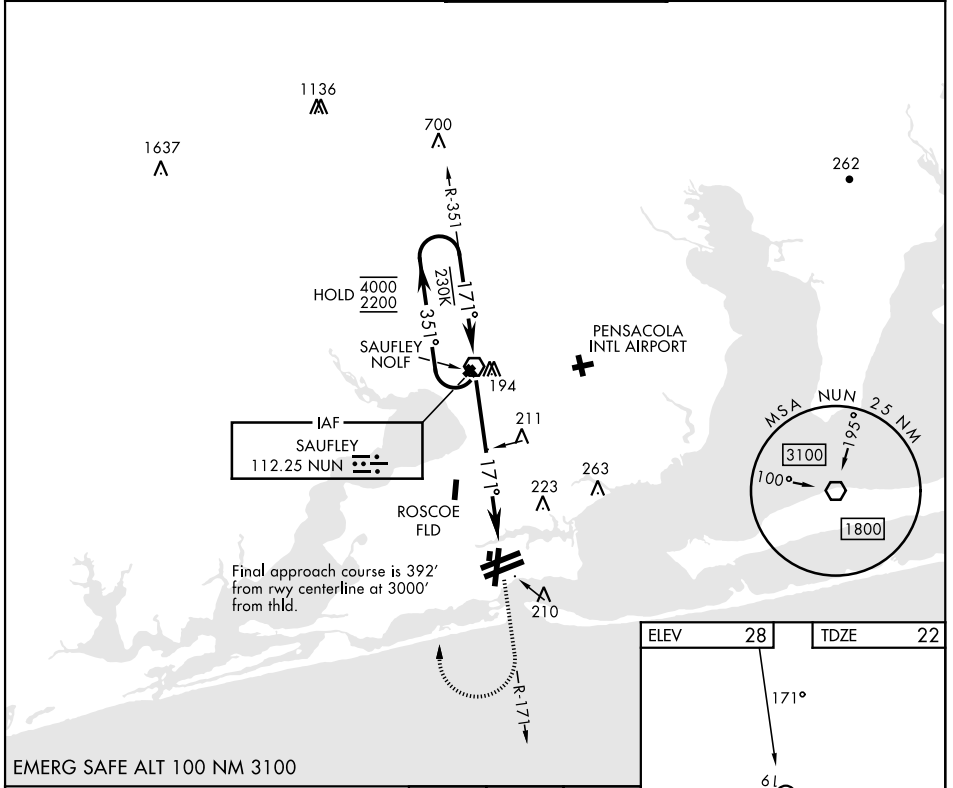
# VOR Y RWY 19

VOR NUN <b>112.25</b>	APCH CRS <b>171°</b>	Rwy Ldg TDZE Arprt Elev <b>7136</b> <b>22</b> <b>28</b>
--------------------------	-------------------------	--

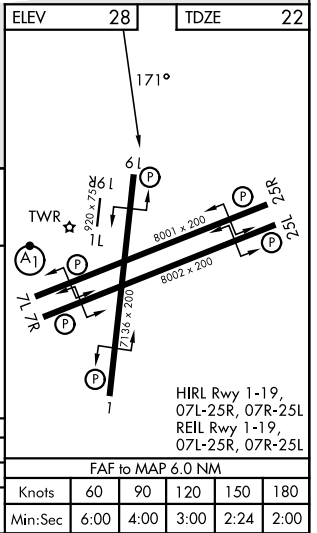
[USN] PENSACOLA NAS (FORREST SHERMAN FLD) (KNPA)

RADAR required		MISSED APPROACH: Climb to 2200 via NUN R-171. Then turn right direct NUN VOR and hold. Remain within 15 NM of NUN.		
----------------	--	--	--	--

ATIS <b>124.35 266.8</b>	PENSACOLA APP CON <b>120.65 270.8</b>	SHERMAN TOWER <b>120.7 340.2</b>	GND CON <b>121.7 336.4</b>	ASR/ PAR
-----------------------------	--	-------------------------------------	-------------------------------	-------------



	NUN VOR		NUN	
CATEGORY	A	B	C	D
S-19	540-1	518 (600-1)	540-1 $\frac{3}{8}$	518 (600-1 $\frac{3}{8}$ )
CIRCLING	540-1	512 (600-1)	540-1 $\frac{1}{2}$	572 (600-2)



# VOR Y RWY 19

SE-3, 19 MAR 2026 to 16 APR 2026

SE-3, 19 MAR 2026 to 16 APR 2026