

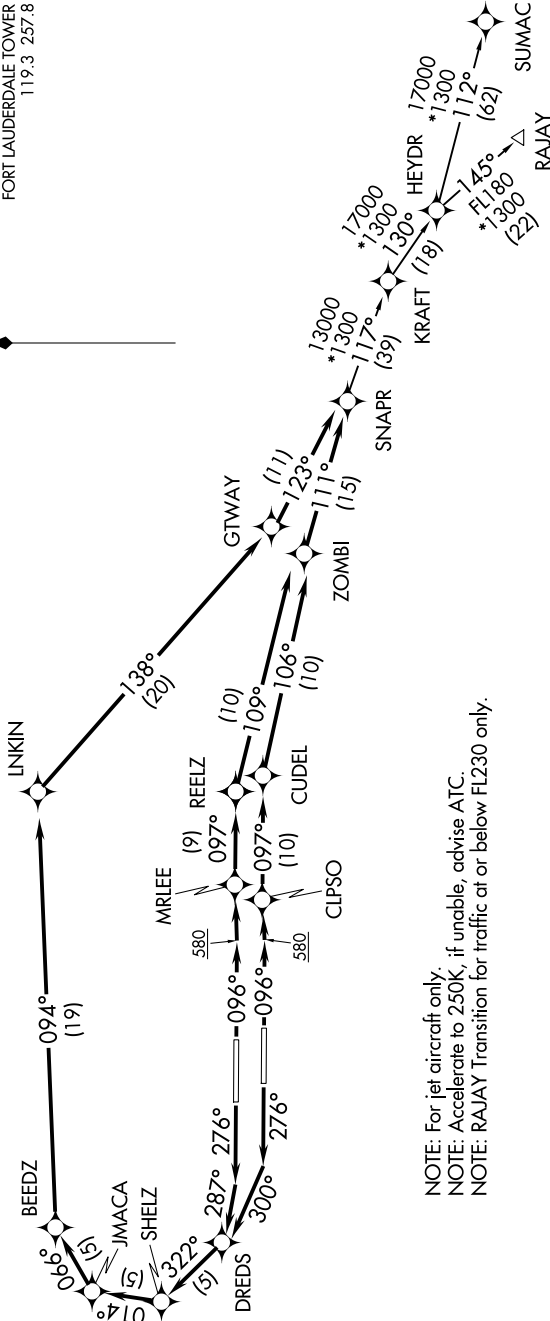
# SNAPR TWO DEPARTURE (RNAV)

MIAMI DEP CON  
126.05 251.1 (W)  
126.85 290.325 (E)  
D-ATIS  
135.0  
CLNC DEL  
128.4  
CPDIC  
GND CON  
121.4  
FORT LAUDERDALE TOWER  
119.3 257.8



RNAV 1 - DME/DME/IRU or GPS.  
From HEYDR - GPS.  
RADAR required.

**TOP ALTITUDE:**  
4000



NOTE: For jet aircraft only.  
NOTE: Accelerate to 250K, if unable, advise ATC.  
NOTE: RAJAY Transition for traffic at or below FL230 only.

**TAKEOFF MINIMUMS**  
Rwys 10L/R, 28L/R: Standard with minimum climb of 500' per NM to 580.

(NARRATIVE ON FOLLOWING PAGE)

NOTE: Chart not to scale.