

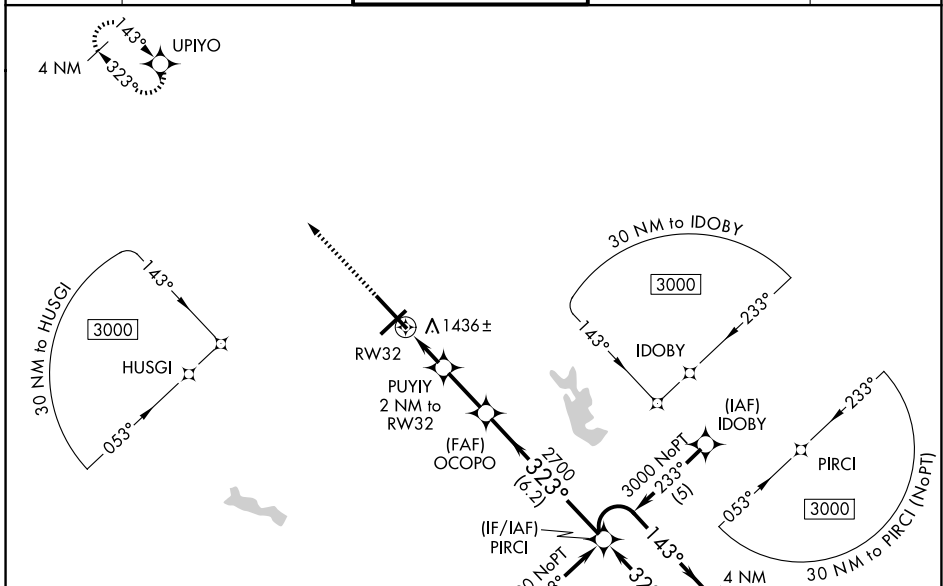
WAAS CH <b>99611</b> <b>W32A</b>	APP CRS <b>323°</b>	Rwy Ldg TDZE Apt Elev	<b>9001</b> <b>1293</b> <b>1297</b>
--	------------------------	-----------------------------	---

# RNAV (GPS) RWY 32

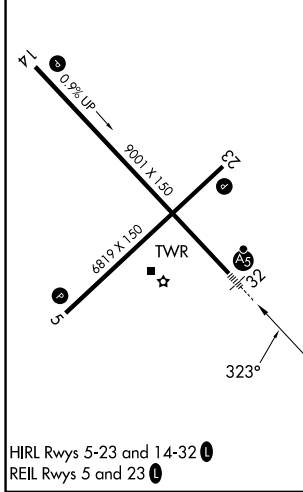
MANSFIELD LAHM RGNL (MFD)

RNP APCH - GPS.		MALSRS	MISSED APPROACH: Climb to 3000 direct UPIYO and hold.
<p>▼ For uncompensated Baro-VNAV systems, LNAV/VNAV NA below -17°C or above 54°C. ▲ *RVR 1800 authorized with use of FD or AP or HUD to DA.</p>			

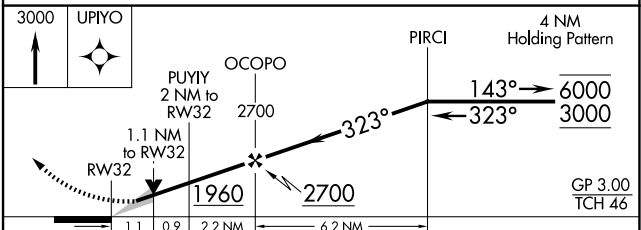
ATIS <b>125.3</b>	CLEVELAND APP CON * <b>128.35 360.65</b>	MANSFIELD TOWER * <b>119.8 (CTAF) 0291.775</b>	GND CON <b>121.8 291.775</b>	UNICOM <b>122.95</b>
----------------------	---	---	---------------------------------	-------------------------



ELEV 1297	<b>D</b>	TDZE 1293
-----------	----------	-----------



HIRL Rwy 5-23 and 14-32  
REIL Rwy 5 and 23



CATEGORY	A	B	C	D
LPV DA*		1493/24	200 (200-½)	
LNAV/VNAV DA		1700/35	407 (500-⅝)	
LNAV MDA	1700/24	407 (500-½)	1700/35	407 (500-⅝)
CIRCLING	1760-1 463 (500-1)	1820-1 523 (600-1)	2000-2 703 (800-2)	2000-2¼ 703 (800-2¼)