

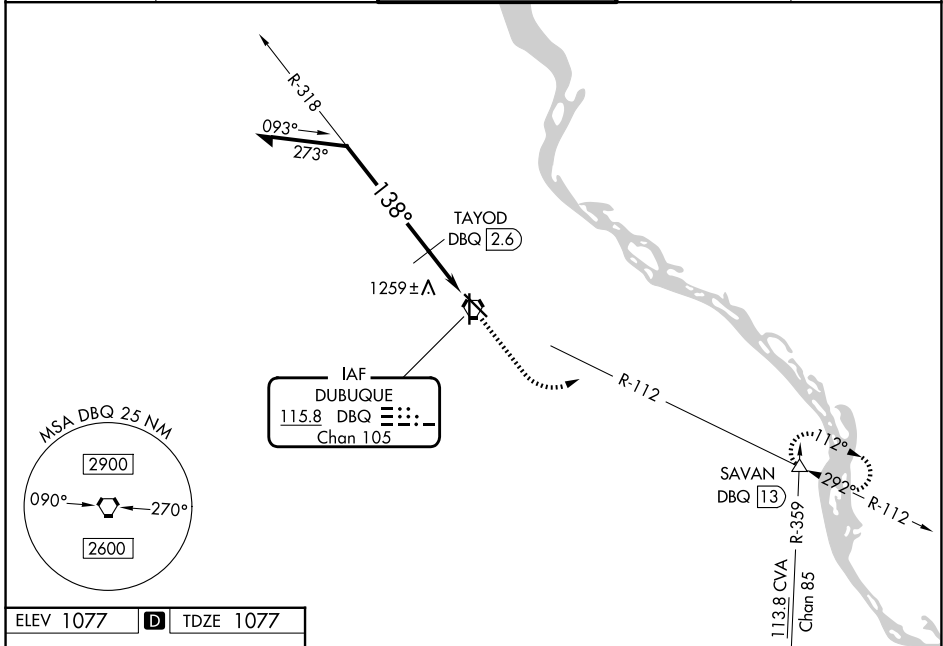
VORTAC DBQ <b>115.8</b> Chan <b>105</b>	APP CRS <b>138°</b>	Rwy Ldg TDZE Apt Elev <b>6502</b> <b>1077</b> <b>1077</b>
---	------------------------	--

# VOR RWY 13

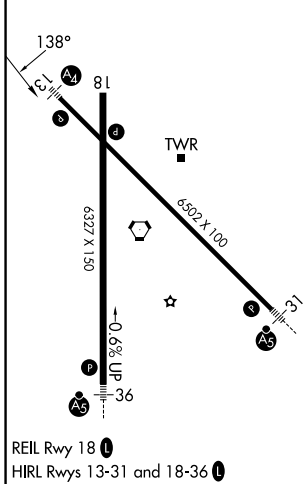
DUBUQUE RGNL (DBQ)

<p>Inop table does not apply to Cat C. If local altimeter setting not received, use Monticello altimeter setting and increase all MDAs 100 feet. VDP NA when using Monticello altimeter setting.</p>	<p>MALS</p>	<p>MISSED APPROACH: Climb to 2500 then climbing left turn to 3300 via DBQ VORTAC R-112 to SAVAN INT/13 DME and hold.</p>

ATIS <b>127.25</b>	CHICAGO CENTER <b>133.95 281.4</b>	DUBUQUE TOWER * <b>119.5 (CTAF) 254.4</b>	GND CON <b>121.8</b>	UNICOM <b>122.95</b>
-----------------------	---------------------------------------	--	-------------------------	-------------------------



ELEV 1077	<b>D</b>	TDZE 1077
-----------	----------	-----------



VGSI and descent angles not coincident (VGSI Angle 3.00/TCH 44).

Remain within 10 NM

2800 - 318° -> TAYOD DBQ 2.6 - 138° -> DBQ VORTAC 1780 - 3.03° TCH 50

DBQ VORTAC: 2500, 3300, SAVAN

\*1880 when using Monticello altimeter setting.

CATEGORY	A	B	C	D
S-13	1780-3/4	703 (800-3/4)	1780-2 703 (800-2)	1780-2 1/4 703 (800-2 1/4)
CIRCLING	1780-1	703 (800-1)	1780-2 703 (800-2)	1800-2 1/4 723 (800-2 1/4)
TAYOD FIX MINIMUMS				
S-13	1520-3/4	443 (500-3/4)	1520-1 1/4 443 (500-1 1/4)	1520-1 1/2 443 (500-1 1/2)
CIRCLING	1580-1	503 (600-1)	1600-1 1/2 523 (600-1 1/2)	1800-2 1/4 723 (800-2 1/4)