

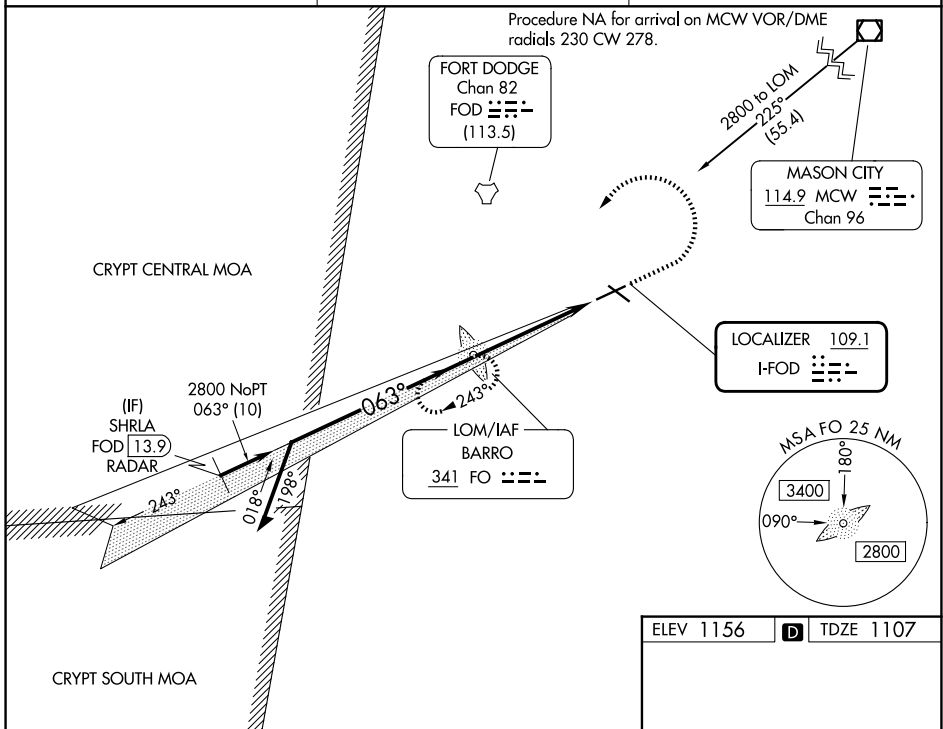
LOC I-FOD 109.1	APP CRS 063°	Rwy Ldg 6547
		TDZE 1107
		Apt Elev 1156

ILS or LOC RWY 6

FORT DODGE RGNL (FOD)

ADF required. RADAR required for procedure entry at SHRLA.	MALSR 	MISSED APPROACH: Climb to 2800 then left turn direct BARRO LOM and hold.
NA DME from FOD DME. Simultaneous reception of I-FOD and FOD DME required. For inop ALS, increase S-LOC 6 Cat C/D visibility to 1 1/2 SM.		

AWOS-3PT 118.775	MINNEAPOLIS CENTER 134.0 288.3	UNICOM 123.0 (CTAF)
----------------------------	--	-------------------------------



NC-3, 19 MAR 2026 to 16 APR 2026

NC-3, 19 MAR 2026 to 16 APR 2026

ELEV 1156		TDZE 1107
-----------	--	-----------

Remain within 10 NM

2800

243°

063°

2800

2680

4.9 NM

2800

↑ 2800

↻

FO

6547 X 150

5300 X 100

1.2% UP

0.6% UP

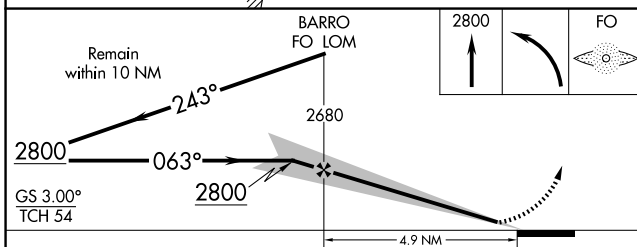
MIRL Rwy 12-30

REIL Rwys 12, 24 and 30

HIRL Rwy 6-24

FAF to MAP 4.9 NM

Knots	60	90	120	150	180
Min:Sec	4:54	3:16	2:27	1:58	1:38



CATEGORY	A	B	C	D
S-ILS 6	1307-1/2		200 (200-1/2)	
S-LOC 6	1600-1/2	493 (500-1/2)	1600-1	493 (500-1)
CIRCLING	1600-1 444 (500-1)	1620-1 464 (500-1)	1740-1 1/2 584 (600-1 1/2)	2080-3 924 (1000-3)