

|  |                        |                             |   |
|--|------------------------|-----------------------------|---|
| WAAS<br>CH <b>82615</b><br><b>W30A</b> | APP CRS<br><b>305°</b> | Rwy Ldg<br>TDZE<br>Apt Elev | <b>5301</b><br><b>1142</b><br><b>1156</b> |
|--|------------------------|-----------------------------|---|

# RNAV (GPS) RWY 30

FORT DODGE RGNL (FOD)

RNP APCH.

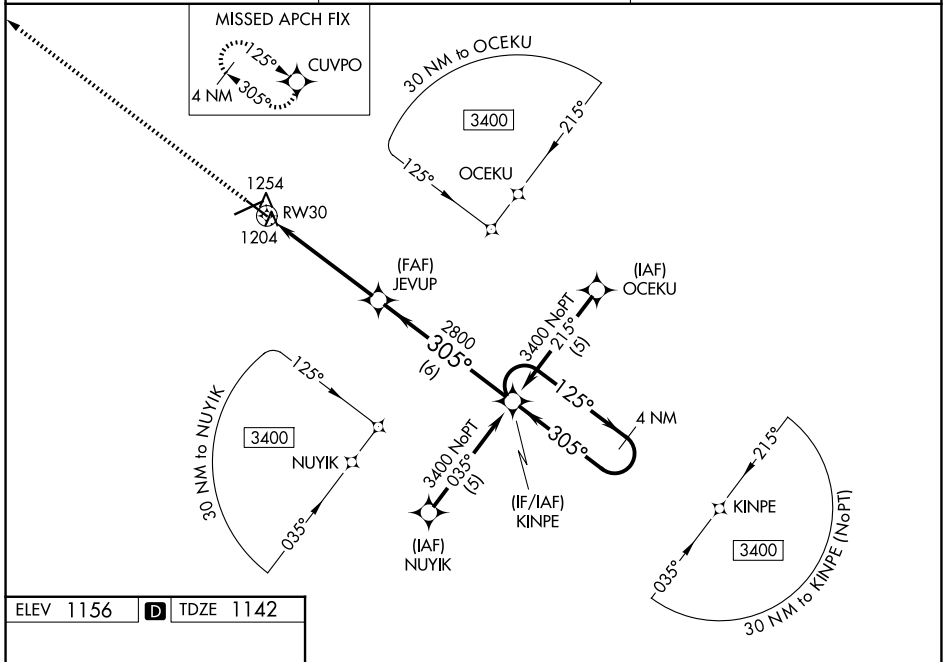
▼ For uncompensated Baro-VNAV systems, LNAV/VNAV NA below -17°C or above 54°C.  
 ▲ Helicopter visibility reduction below ¼ SM NA. VDP and Baro-VNAV NA when using Webster City altimeter setting. When local altimeter setting not received, use Webster City altimeter setting: increase LPV DA to 1466 feet and all Cats visibility ¼ SM; increase LNAV/VNAV DA to 1516 feet; increase all MDA 60 feet and LNAV Cats C/D and Circling Cat C visibility ¼ SM.

MISSED APPROACH: Climb to 3400 direct CUVPO and hold.

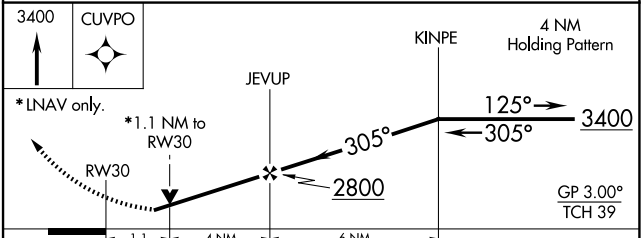
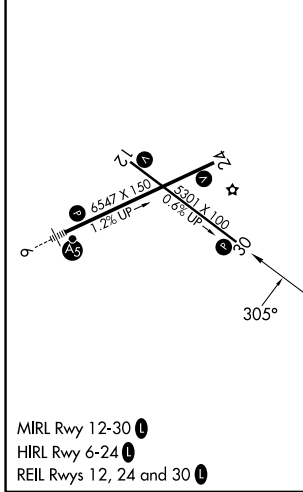
AWOS-3PT  
**118.775**

MINNEAPOLIS CENTER  
**134.0 288.3**

UNICOM  
**123.0 (CTAF) 0**



|           |          |           |
|-----------|----------|-----------|
| ELEV 1156 | <b>D</b> | TDZE 1142 |
|-----------|----------|-----------|



| CATEGORY     | A                     | B                     | C                       | D                       |
|--------------|-----------------------|-----------------------|-------------------------|-------------------------|
| LPV DA       |                       | 1424-1                | 282 (300-1)             |                         |
| LNAV/VNAV DA |                       | 1474-1¼               | 332 (400-1¼)            |                         |
| LNAV MDA     |                       | 1520-1                | 378 (400-1)             | 1520-1¼<br>378 (400-1¼) |
| CIRCLING     | 1560-1<br>404 (500-1) | 1620-1<br>464 (500-1) | 1740-1½<br>584 (600-1½) | 2080-3<br>924 (1000-3)  |