

VORTAC SSR 114.0 Chan 87	APP CRS 297°	Rwy Ldg TDZE Apt Elev	6720 33 36
--	------------------------	-----------------------------	---------------------------------------

VOR RWY 29

GUSTAVUS (GST)(PAGS)

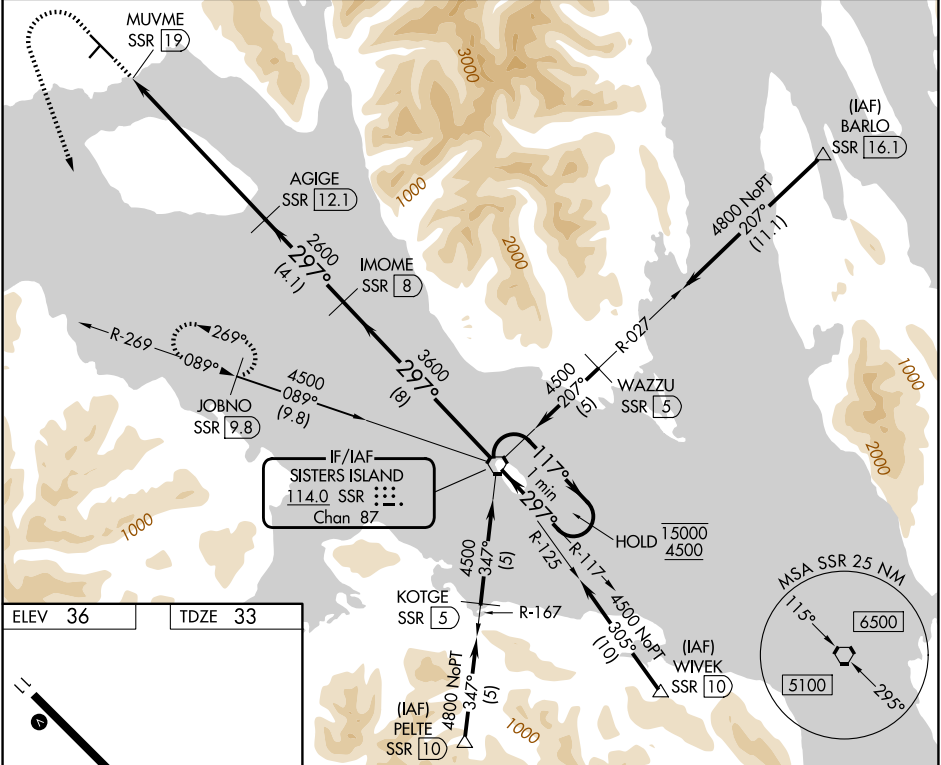
DME required.

⚠ Circling NA northeast of Rwy 11-29. Rwy 29 helicopter visibility reduction below 1 SM NA. Straight-in Rwy 29 NA at night, Circling Rwy 2, 20, 29 NA at night. When local altimeter setting not received, use HNH/PAOH altimeter setting and increase all MDAs 60 feet.

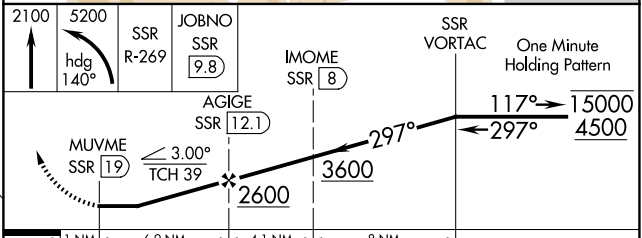
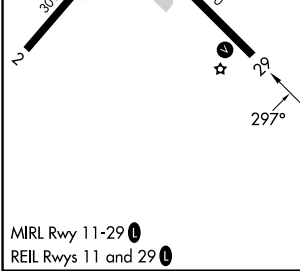
⚠ -13°C

MISSED APPROACH: Climb to 2100 then climbing left turn to 5200 on heading 140° and SSR VORTAC R-269 to JOBNO/9.8 DME and hold, continue climb-in-hold to 5200.

AWOS-3P 125.9	ANCHORAGE CENTER 133.2 360.65	JUNEAU RADIO 122.65	CTAF 122.50
-------------------------	---	-------------------------------	-----------------------



ELEV 36	TDZE 33
---------	---------



CATEGORY	A	B	C	D
S-29	1300-1¼ 1267 (1300-1¼)	1300-1½ 1267 (1300-1½)	1300-3	1267 (1300-3)
CIRCLING	1300-1¼ 1264 (1300-1¼)	1300-1½ 1264 (1300-1½)	1300-3	1264 (1300-3)

AK, 19 MAR 2026 to 14 MAY 2026

AK, 19 MAR 2026 to 14 MAY 2026