

NDB ICW <b>525</b>	APP CRS <b>056°</b>	Rwy Ldg <b>4600</b> TDZE <b>368</b> Apt Elev <b>368</b>
-----------------------	------------------------	--

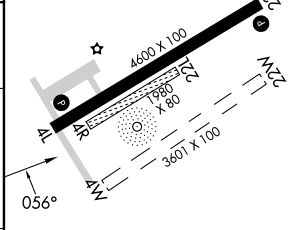
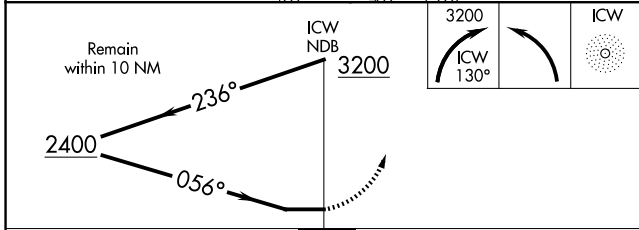
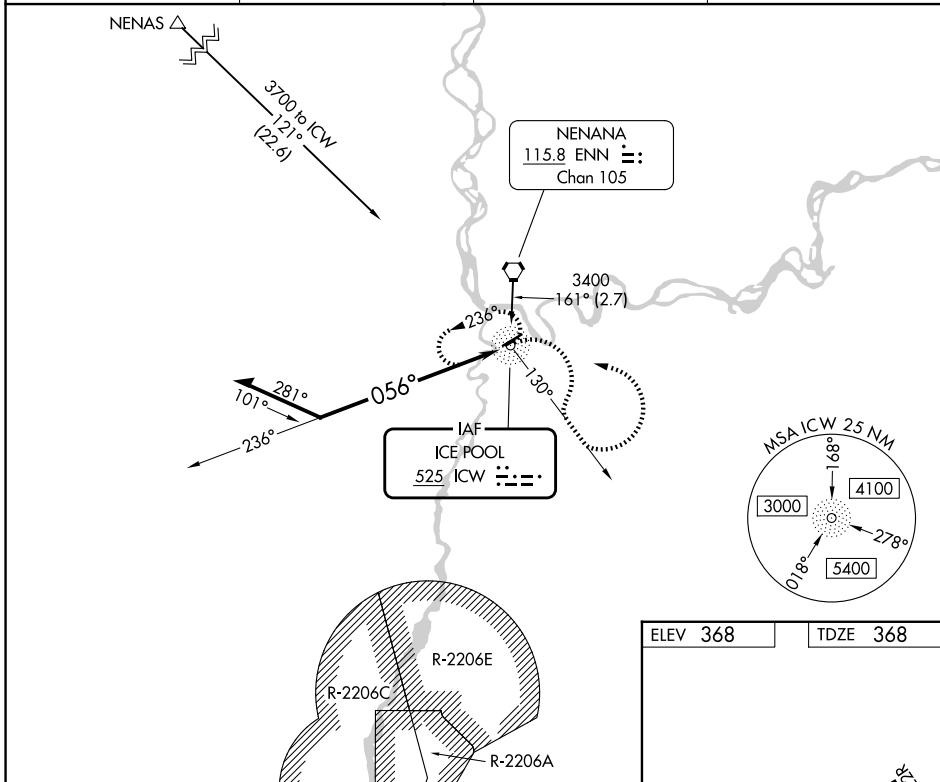
# NDB RWY 4L

NENANA MUNI (ENN)(PANN)

**Procedure NA at night. Circling NA northwest of Rwy 4L-22R. Circling NA to Rws 4R, 22L, 4W and 22W. Rwy 4L helicopter visibility reduction below 1 SM NA. When local altimeter setting not received, use FAI/PAFA altimeter setting and increase all MDAs 100 feet and S-4L visibility Cats C and D ¼ SM, and Circling visibility Cats C and D ¼ SM.**

**MISSED APPROACH:** Climbing right turn to 3200 on ICW NDB bearing 130°, then left turn direct ICW NDB and hold.

ASOS <b>125.2</b>	FAIRBANKS APP CON <b>125.35 363.2</b>	FAIRBANKS RADIO <b>122.5</b>	CTAF <b>122.10</b>
----------------------	--	---------------------------------	-----------------------



CATEGORY	A	B	C	D
S-4L	1000-1	632 (700-1)	1000-1¾	632 (700-1¾)
CIRCLING	1000-1	632 (700-1)	1140-2¼ 772 (800-2¼)	1140-2½ 772 (800-2½)

ELEV 368      TDZE 368

REIL Rws 4L and 22R  
MIRL Rws 4L-22R  
MIRL Rws 4R-22L

AK, 19 MAR 2026 to 14 MAY 2026

AK, 19 MAR 2026 to 14 MAY 2026