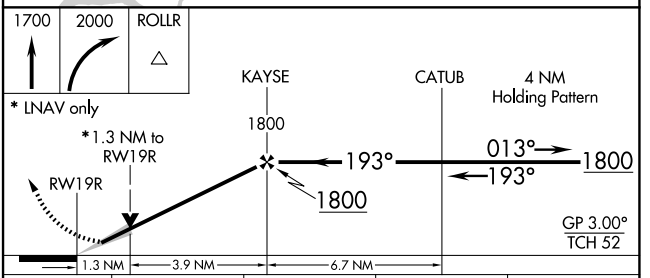
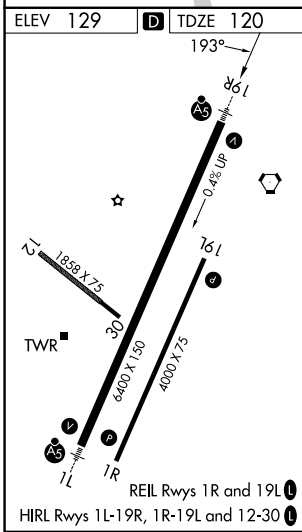
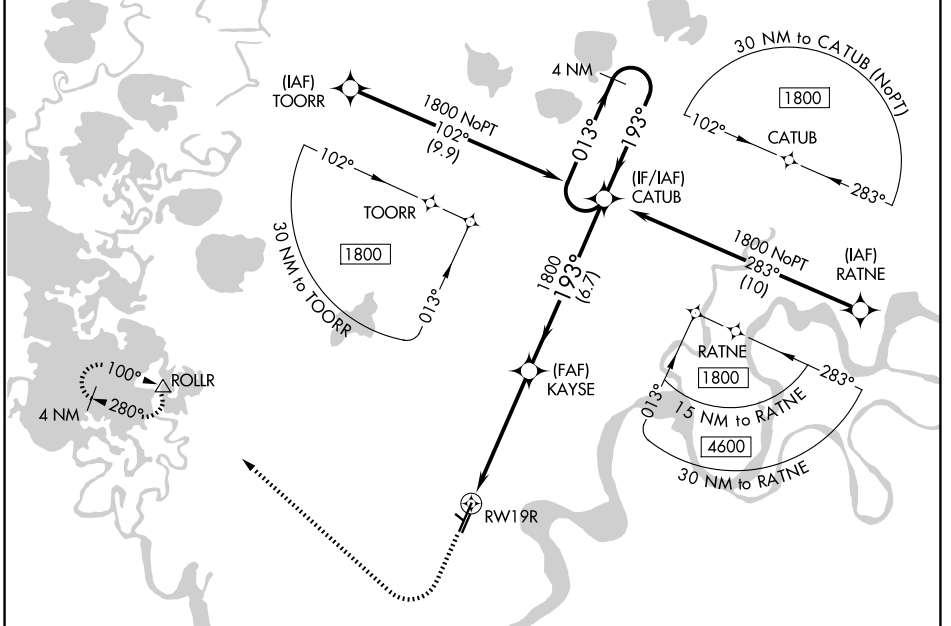


WAAS CH <b>70507</b> <b>W19A</b>	APP CRS <b>193°</b>	Rwy Ldg <b>6400</b> TDZE <b>120</b> Apt Elev <b>129</b>
----------------------------------------	------------------------	---------------------------------------------------------------

# RNAV (GPS) RWY 19R

BETHEL (BET)(PABE)

<p>▼ For uncompensated Baro-VNAV systems, LNAV/VNAV NA below -25°C (-13°F) or above 54°C (130°F). Circling NA west of Rwy 1L-19R. DME/DME RNP-0.3 NA.</p>	MALSR	MISSED APPROACH: Climb to 1700 then climbing right turn to 2000 direct ROLLR and hold.
	<p>ATIS <b>119.8</b></p>	<p>ANCHORAGE CENTER <b>125.2 372.0</b></p>
<p>GND CON <b>121.7</b></p>		



CATEGORY	A	B	C	D
LPV DA	DA	320/24	200 (200-½)	
LNAV/VNAV DA	DA	479/40	359 (400-¾)	
LNAV MDA	560/24	440 (500-½)	560/45	440 (500-¾)
CIRCLING	560-1	600-1	600-1½	680-2
	431 (500-1)	471 (500-1)	471 (500-1½)	551 (600-2)

AK, 19 MAR 2026 to 14 MAY 2026

AK, 19 MAR 2026 to 14 MAY 2026