

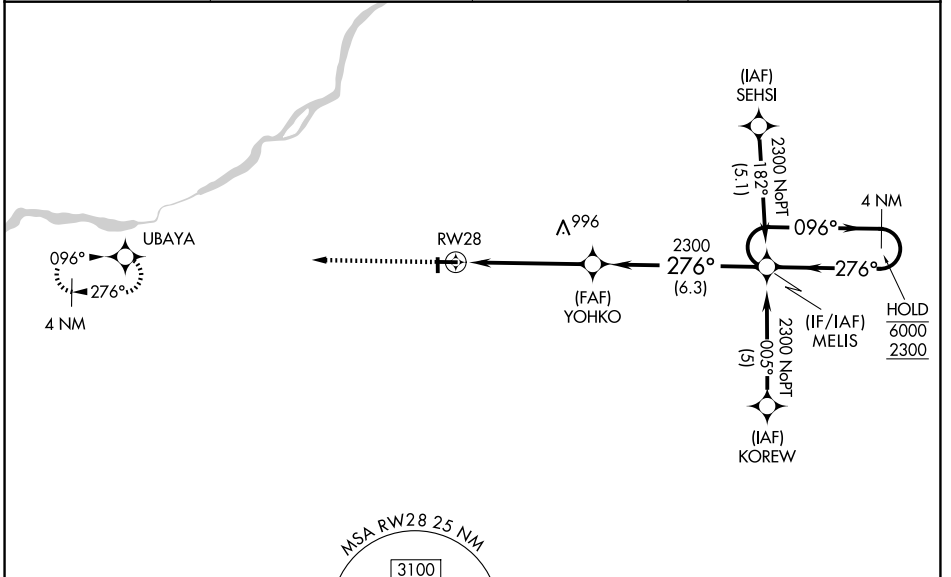
WAAS CH <b>82702</b> <b>W28A</b>	APP CRS <b>276°</b>	Rwy Ldg TDZE Apt Elev	<b>4199</b> <b>673</b> <b>673</b>
--	------------------------	-----------------------------	---

# RNAV (GPS) RWY 28

WOOD COUNTY (1G $\emptyset$ )

RNP APCH.	<p><b>▽</b> Circling Rwy 36 NA at night. Rwy 28 helicopter visibility reduction below <math>\frac{3}{4}</math> SM NA. VDP NA when using Toledo Express altimeter setting.</p> <p><b>⚠</b> NA When local altimeter setting not received, use Toledo Express altimeter setting: increase DA to 958 feet; increase all MDA 40 feet and LNAV Cat C visibility <math>\frac{1}{8}</math> SM, Circling Cats C/D visibility <math>\frac{1}{4}</math> SM.</p>	MISSED APPROACH: Climb to 2300 direct UBAYA and hold.
-----------	--	---

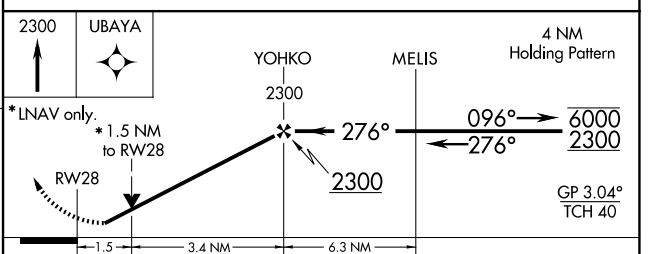
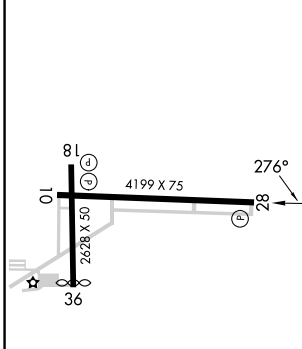
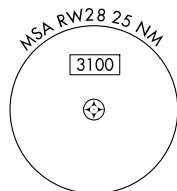
AWOS-3 <b>120.725</b>	TOLEDO APP CON <b>126.1 317.55</b>	CLNC DEL <b>125.6</b>	UNICOM <b>122.975 (CTAF) <math>\emptyset</math></b>
--------------------------	---------------------------------------	--------------------------	--



EC-2, 19 MAR 2026 to 16 APR 2026

EC-2, 19 MAR 2026 to 16 APR 2026

ELEV 673	TDZE 673
----------	----------



CATEGORY	A	B	C	D
LPV DA	923-1 250 (300-1)			
LNAV MDA	1200-1	527 (600-1)	1200-1 $\frac{1}{2}$ 527 (600-1 $\frac{1}{2}$ )	1200-1 $\frac{3}{4}$ 527 (600-1 $\frac{3}{4}$ )
CIRCLING	1300-1	627 (700-1)	1320-1 $\frac{3}{4}$ 647 (700-1 $\frac{3}{4}$ )	1320-2 647 (700-2)

REIL Rwy 10, 18 and 28  $\emptyset$   
MIRL Rwy 10-28 and 18-36  $\emptyset$