

WAAS CH 86534 W34A	APP CRS 343°	Rwy Ldg TDZE Apt Elev	4000 739 746
--	------------------------	-----------------------------	---

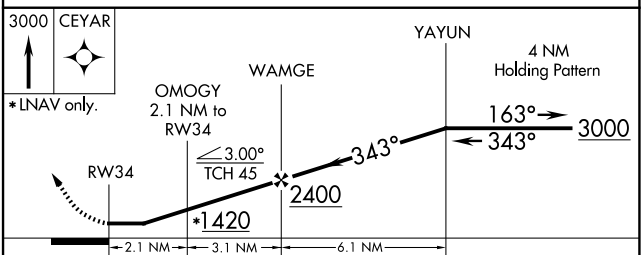
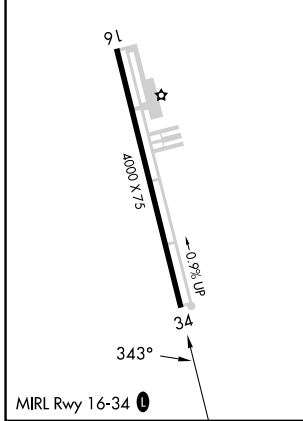
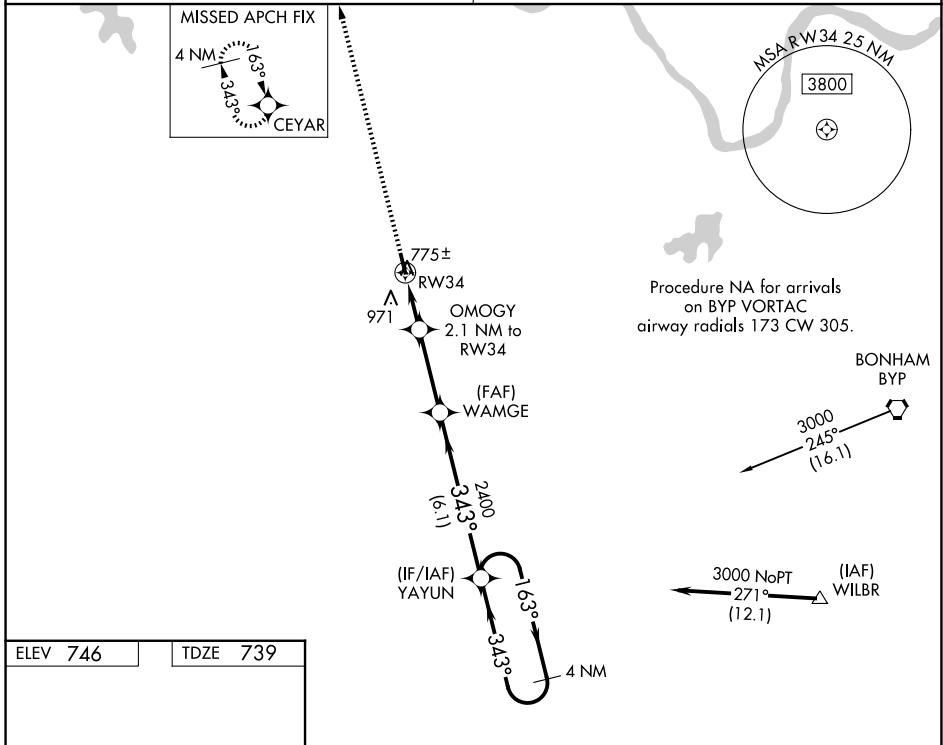
RNAV (GPS) RWY 34

SHERMAN MUNI (SWI)

NA DME/DME RNP-0.3 NA. Use Sherman/Denison altimeter setting, if not received, use Dallas Love Fld altimeter setting and increase all MDA 140 feet; increase LP and LNAV Cat C visibility 3/8 mile, Circling Cat B visibility 1/4 mile and Cat C visibility 1/2 mile. Procedure NA at night. Helicopter visibility reduction below 1 SM NA.

MISSED APPROACH:
Climb to 3000 direct CEYAR and hold.

FORT WORTH CENTER 124.75 323.0	UNICOM 122.8 (CTAF) 0
--	---------------------------------



CATEGORY	A	B	C	D
LP MDA	1060-1 321 (400-1)			NA
LNAV MDA	1100-1	361 (400-1)	1100-1 1/8 361 (400-1 1/8)	NA
CIRCLING	1300-1 554 (600-1)	1420-1 674 (700-1)	1620-2 1/2 874 (900-2 1/2)	NA

SC-2, 19 MAR 2026 to 16 APR 2026

SC-2, 19 MAR 2026 to 16 APR 2026