

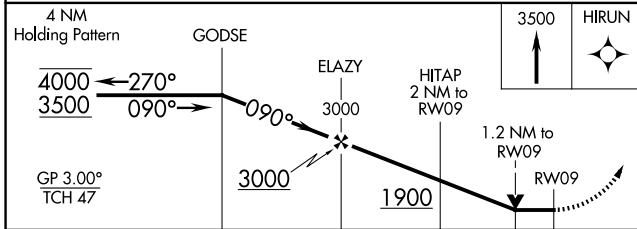
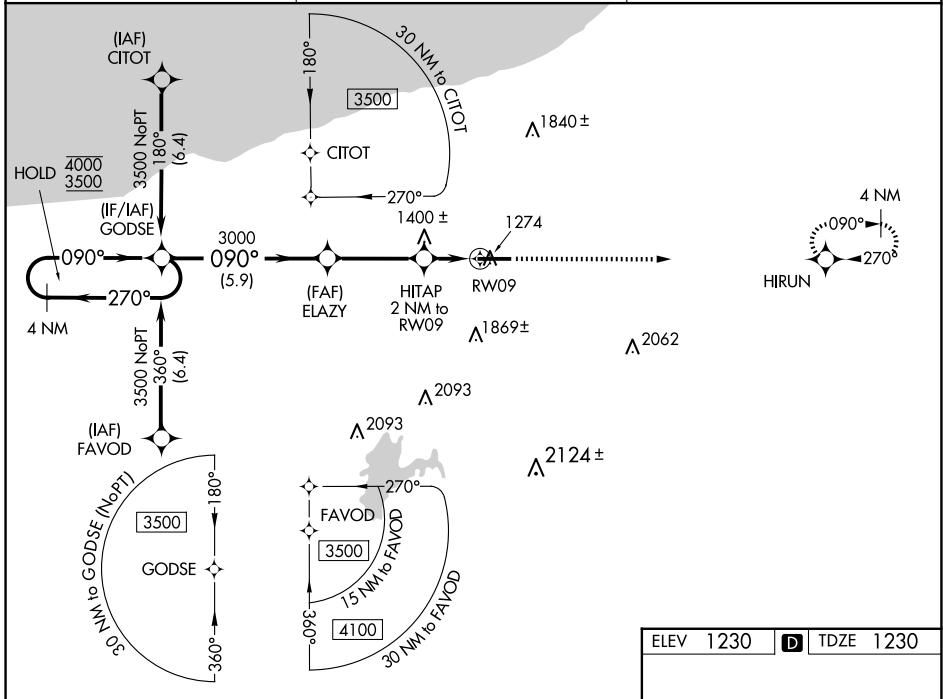
WAAS CH 86747 W09A	APP CRS 090°	Rwy Ldg TDZE Apt Elev	6501 1230 1230
--	------------------------	-----------------------------	---

RNAV (GPS) RWY 9

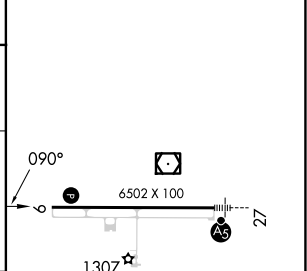
GOGEBIC/IRON COUNTY (IWD)

RNP APCH - GPS	Rwy 9 helicopter visibility reduction below 3/4 SM NA. For uncompensated Baro-VNAV systems, LNAV/VNAV NA below -17°C or above 54°C.	MISSED APPROACH: Climb to 3500 direct HIRUN and hold.
----------------	---	--

AWOS-3PT 125.175	MINNEAPOLIS CENTER 133.55	UNICOM 122.8 (CTAF)
----------------------------	-------------------------------------	-------------------------------



ELEV 1230	D TDZE 1230
-----------	--------------------



CATEGORY	A	B	C	D
LPV DA		1480-3/4	250 (300-3/4)	
LNAV/VNAV DA		1630-1 1/8	400 (400-1 1/8)	
LNAV MDA	1660-1	430 (500-1)	1660-1 1/4	430 (500-1 1/4)
CIRCLING	2100-1 1/4	870 (900-1 1/4)	2200-3 970 (1000-3)	2220-3 990 (1000-3)

REIL Rwy 9 **0**
HIRL Rwy 9-27 **0**

EC-1, 19 MAR 2026 to 16 APR 2026

EC-1, 19 MAR 2026 to 16 APR 2026