

VOR/DME IWD <b>108.8</b> Chan <b>25</b>	APP CRS <b>079°</b>	Rwy Ldg TDZE <b>1230</b> Apt Elev <b>1230</b>
---	------------------------	---

# VOR RWY 9

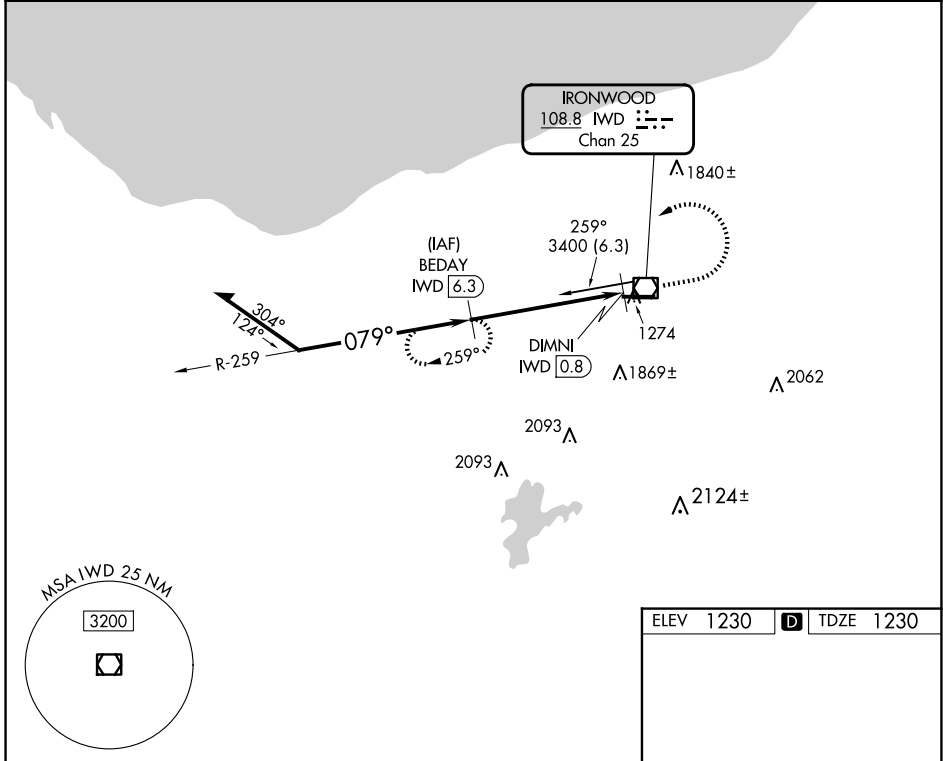
GOGEBIC/IRON COUNTY (IWD)

DME required.

**⚠** Rwy 9 helicopter visibility reduction below 3/4 SM NA. When local altimeter setting not received, use ASX altimeter setting: increase all MDAs 140 feet and S-9 visibility Cat C 1/4 SM and Cat D 1/2 SM, and Circling visibility Cat B 1/4 SM.

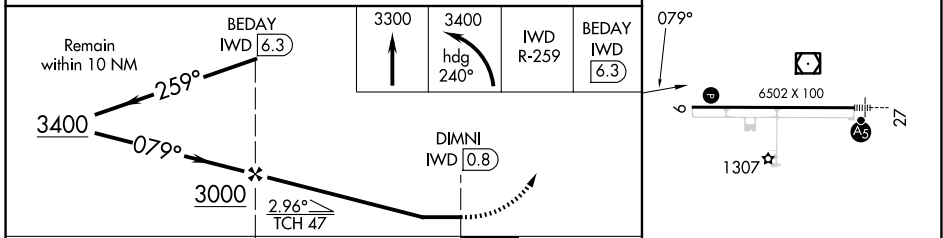
**⚠** MISSED APPROACH: Climb to 3300 then climbing left turn to 3400 on heading 240° and IWD R-259 to BEDAY/6.3 DME and hold.

AWOS-3PT <b>125.175</b>	MINNEAPOLIS CENTER <b>133.55</b>	UNICOM <b>122.8 (CTAF)</b>
----------------------------	-------------------------------------	-------------------------------



EC-1, 19 MAR 2026 to 16 APR 2026

EC-1, 19 MAR 2026 to 16 APR 2026



CATEGORY	A	B	C	D
S-9	1740-1	510 (600-1)	1740-1½	510 (600-1½)
CIRCLING	2100-1¼	870 (900-1¼)	2200-3 970 (1000-3)	2220-3 990 (1000-3)

REIL Rwy 9 **①**  
HIRL Rwy 9-27 **①**