

WAAS CH <b>86936</b> <b>W14A</b>	APP CRS <b>141°</b>	Rwy Ldg <b>5600</b> TDZE <b>953</b> Apt Elev <b>953</b>
--	------------------------	---

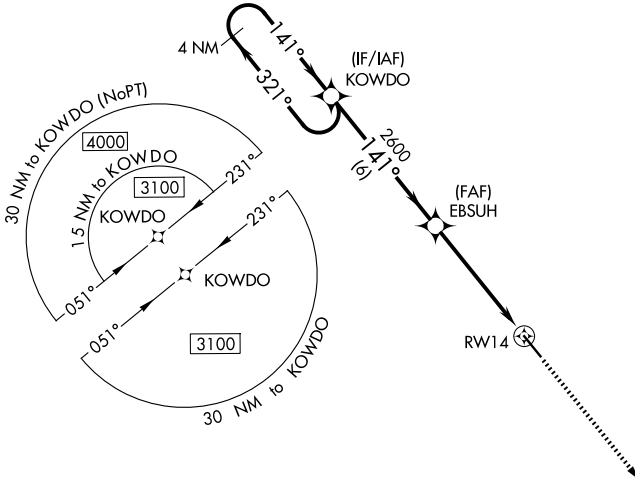
# RNAV (GPS) RWY 14

NEWTON MUNI-EARL JOHNSON FLD (TNU)

**⚠** DME/DME RNP-0.3 NA. When local altimeter setting not received use Des Moines altimeter setting and increase all DA/MDA 80 feet; increase LPV and LNAV/VNAV all Cats and LNAV Cats C/D and Circling Cat C/D visibility ¼ mile. For uncompensated Baro-VNAV systems, LNAV/VNAV NA below -13°C (9°F) or above 54°C (130°F). Rwy 14 helicopter visibility reduction below ¾ SM NA. Baro-VNAV and VDP NA when using Des Moines altimeter setting.

MISSED APPROACH: Climb to 2700 direct UBHIT and hold.

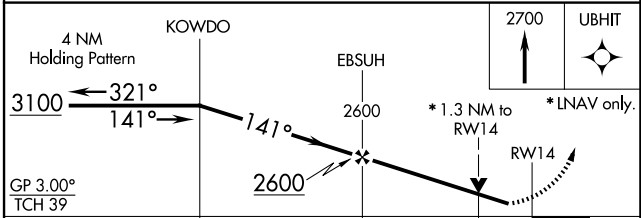
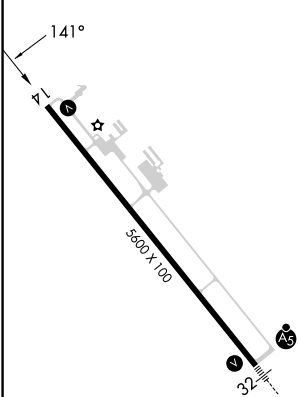
AWOS-3 <b>132.275</b>	DES MOINES APP CON <b>123.9 307.15</b>	CLNC DEL <b>126.3</b>	UNICOM <b>122.8 (CTAF) 0</b>
--------------------------	---	--------------------------	---------------------------------



NC-3, 19 MAR 2026 to 16 APR 2026

NC-3, 19 MAR 2026 to 16 APR 2026

ELEV <b>953</b>	TDZE <b>953</b>
-----------------	-----------------



CATEGORY	A	B	C	D
LPV DA	1203-7/8		250 (300-7/8)	
LNAV/VNAV DA	1203-7/8		250 (300-7/8)	
LNAV MDA	1420-1 467 (500-1)		1420-1 3/8 467 (500-1 3/8)	
CIRCLING	1420-1 467 (500-1)	1440-1 1/2 487 (500-1 1/2)	1520-1 1/2 567 (600-1 1/2)	1600-2 647 (700-2)

REIL Rwy 14 **0**  
MIRL Rwy 14-32 **0**

NEWTON, IOWA  
Amdt 1B 21JUN18

NEWTON MUNI-EARL JOHNSON FLD (TNU)  
**RNAV (GPS) RWY 14**

41°40'N-93°01'W