

| | | | |
|--|------------------------|-----------------------------|---|
| WAAS CH 86904 W23A | APP CRS 230° | Rwy Idg TDZE Apt Elev | 5500 185 192 |
|--|------------------------|-----------------------------|---|

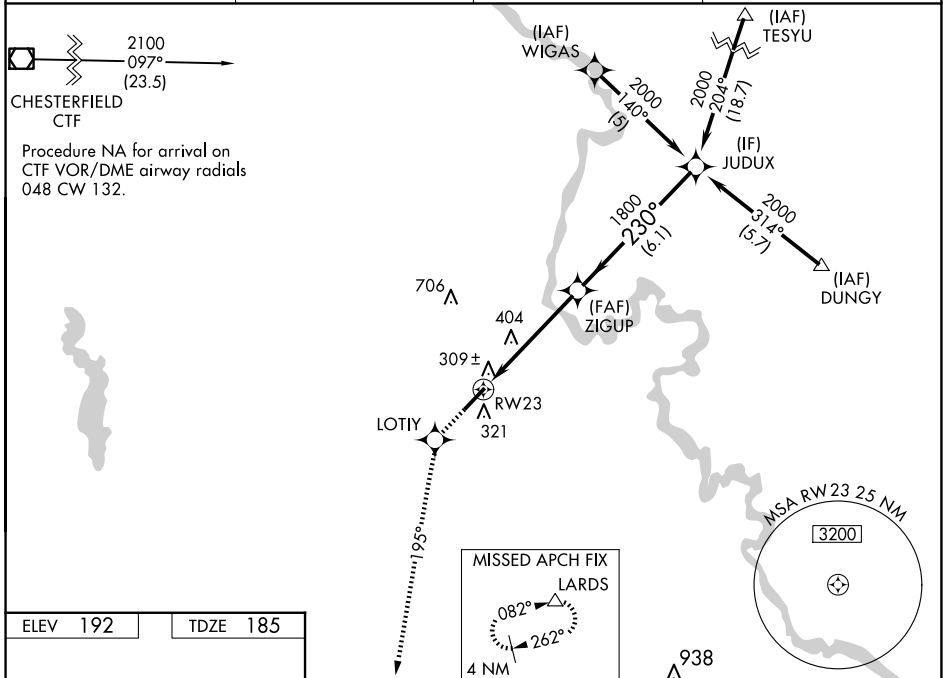
RNAV (GPS) RWY 23

DARLINGTON COUNTY (UDG)

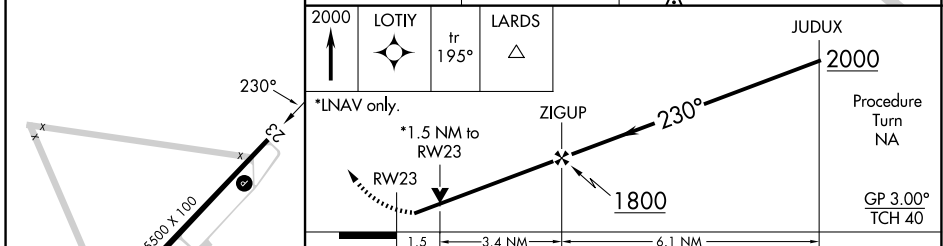
⚠ For uncompensated Baro-VNAV systems, LNAV/VNAV NA below -15°C (5°F) or above 48°C (118°F). When local altimeter setting not received, use Florence altimeter setting: increase LPV DA to 527 feet and all visibilities ¼ SM; increase LNAV/VNAV DA to 627 feet; increase all MDAs 60 feet and visibility Cat D ¼ SM. DME/DME RNP-0.3 NA. Helicopter visibility reduction below ¾ SM NA. Baro-VNAV NA when using Florence altimeter setting.

MISSED APPROACH: Climb to 2000 direct LOTIY and via 195° track to LARDS and hold.

| | | | |
|----------------------------|--|---------------------------|--------------------------------|
| AWOS-3PT 119.925 | FLORENCE APP CON ★ 118.6 341.7 | CLNC DEL 118.55 | UNICOM 123.0(CTAF) 0 |
|----------------------------|--|---------------------------|--------------------------------|



| | |
|----------|----------|
| ELEV 192 | TDZE 185 |
|----------|----------|



| CATEGORY | A | B | C | D |
|--------------|---------------------|---------------------|---------------------|----------------------|
| LPV DA | 479-1 294 (300-1) | | | |
| LNAV/VNAV DA | 579-1½ 394 (400-1½) | | | |
| LNAV MDA | 700-1 515 (600-1) | 700-1½ 515 (600-1½) | 700-1¾ 515 (600-1¾) | 700-1¾ 515 (600-1¾) |
| CIRCLING | 700-1 508 (600-1) | 720-1½ 528 (600-1½) | 720-1½ 528 (600-1½) | 1020-2¾ 828 (900-2¾) |

SE-2, 19 MAR 2026 to 16 APR 2026

SE-2, 19 MAR 2026 to 16 APR 2026