

LOC I-OSU <b>108.5</b>	APP CRS <b>092°</b>	Rwy Ldg TDZE Apt Elev	<b>5004</b> <b>905</b> <b>905</b>
---------------------------	------------------------	-----------------------------	---

# ILS or LOC RWY 9R

## OHIO STATE UNIVERSITY (OSU)

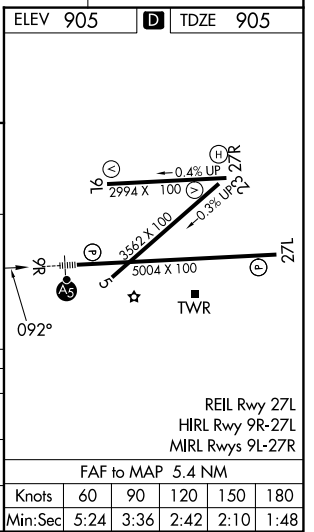
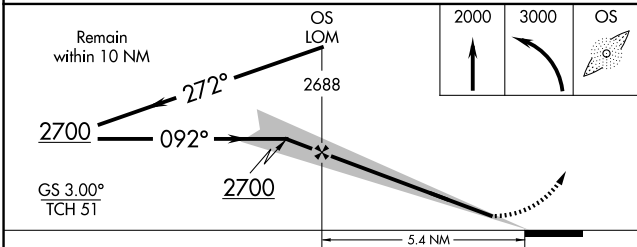
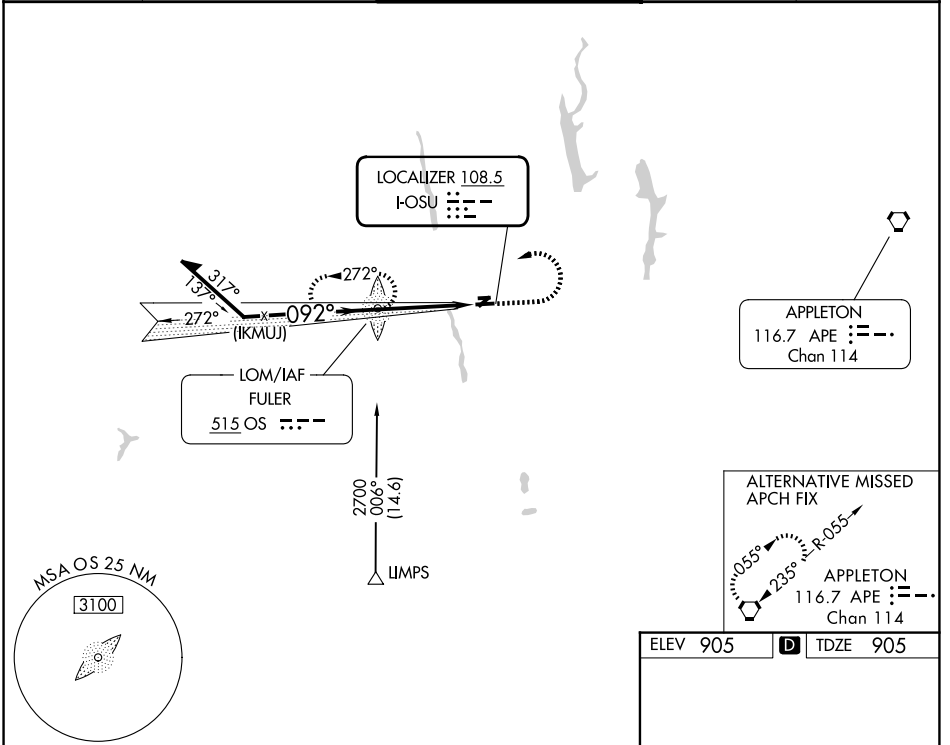
ADF required for procedure entry. ADF required.

When local altimeter setting not received, use John Glenn Columbus Intl altimeter setting; increase DA to 1140 feet; increase all MDAs 40 feet and S-9R visibility Cat C 1/8 SM and Cat D and Circling Cat D 1/4 SM. Circling Rwy 23 NA at night.

MALSRL  
AS

MISSED APPROACH: Climb to 2000 then climbing left turn to 3000 direct FULER LOM and hold.

ATIS <b>121.35</b>	COLUMBUS APP CON <b>125.95 317.775</b>	STATE TOWER ★ <b>118.8 (CTAF) 254.325</b>	GND CON <b>121.7</b>	UNICOM <b>122.95</b>
-----------------------	---	--	-------------------------	-------------------------



CATEGORY	A	B	C	D
S-ILS 9R		1105-1/2	200 (200-1/2)	
S-LOC 9R	1420-1/2	515 (600-1/2)	1420-1	515 (600-1)
CIRCLING	1420-1	515 (600-1)	1420-1 1/2 515 (600-1 1/2)	1680-2 1/2 775 (800-2 1/2)

EC-2, 19 MAR 2026 to 16 APR 2026

EC-2, 19 MAR 2026 to 16 APR 2026