

LOM OS <b>515</b>	APP CRS <b>093°</b>	Rwy Ldg TDZE Apt Elev	<b>5004</b> <b>905</b> <b>905</b>
----------------------	------------------------	-----------------------------	---

# NDB RWY 9R

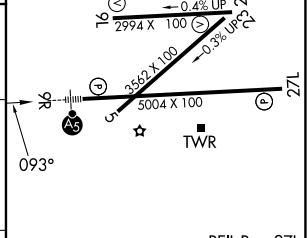
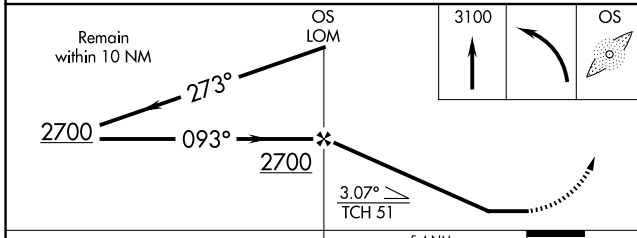
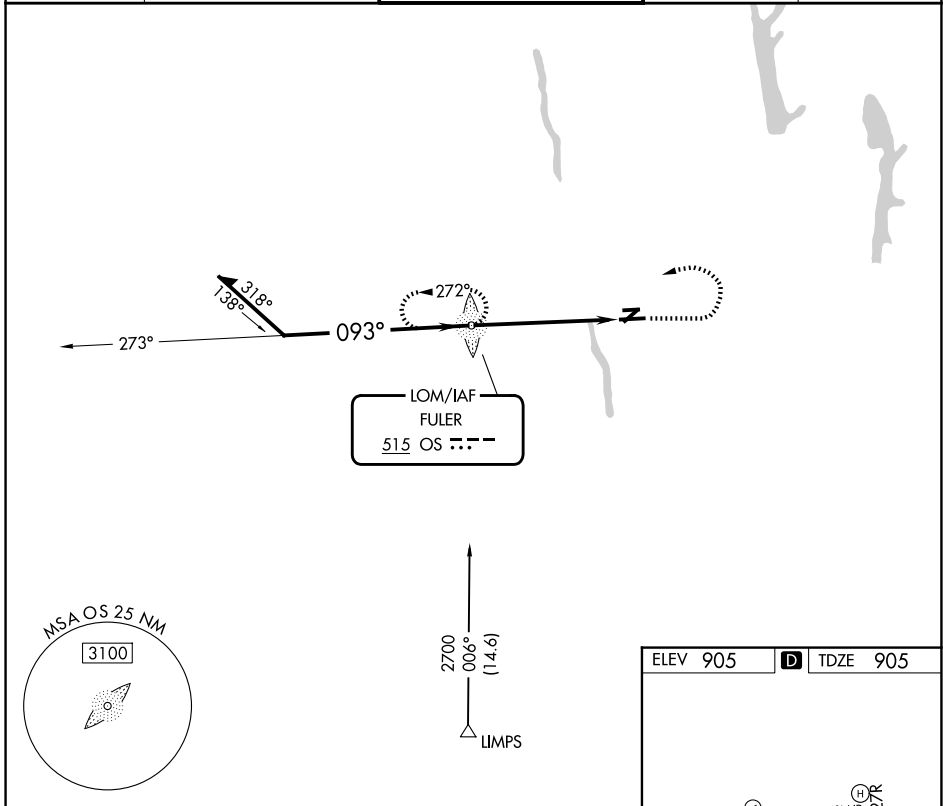
OHIO STATE UNIVERSITY (OSU)

**⚠** When local altimeter setting not received, use John Glenn Columbus Intl altimeter setting and increase all MDAs 40 feet and S-9R visibility Cat C ¼ SM and Cat D and Circling Cat D ½ SM. Circling Rwy 23 NA at night.



**MISSED APPROACH:** Climb to 3100 then left turn direct OS LOM and hold.

ATIS <b>121.35</b>	COLUMBUS APP CON <b>125.95 317.775</b>	STATE TOWER ★ <b>118.8 (CTAF) 254.325</b>	GND CON <b>121.7</b>	UNICOM <b>122.95</b>
-----------------------	---	--	-------------------------	-------------------------



CATEGORY	A	B	C	D
S-9R	1460-¾ 555 (600-¾)		1460-1½ 555 (600-1½)	
CIRCLING	1460-1 555 (600-1)		1460-1⅝ 555 (600-1⅝)	1680-2½ 775 (800-2½)

ELEV 905	<b>D</b> TDZE 905
REIL Rwy 27L HIRL Rwy 9R-27L MIRL Rwys 9L-27R	
FAF to MAP 5.4 NM	
Knots	60 90 120 150 180
Min:Sec	5:24 3:36 2:42 2:10 1:48