

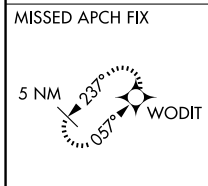
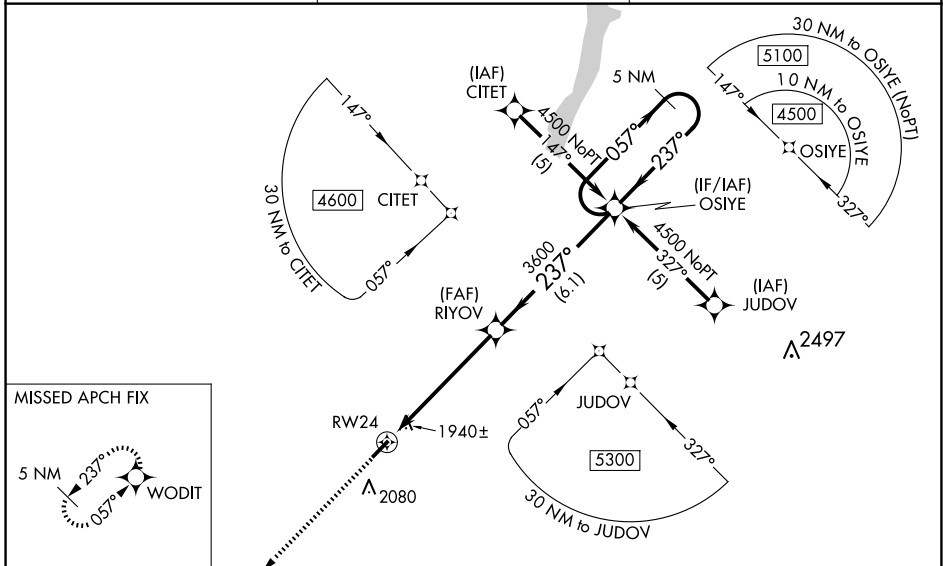
| | | | |
|--|------------------------|-----------------------------|---|
| WAAS CH 70409 W24A | APP CRS 237° | Rwy Ldg TDZE Apt Elev | 4199 1758 1763 |
|--|------------------------|-----------------------------|---|

RNAV (GPS) RWY 24

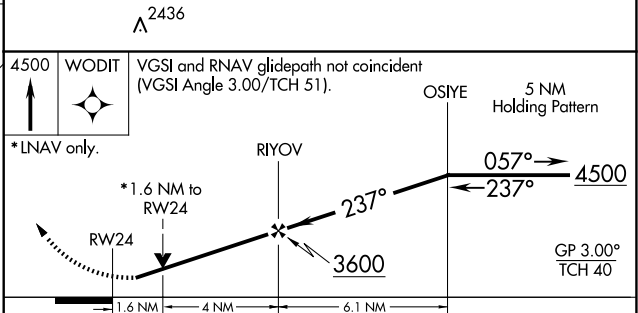
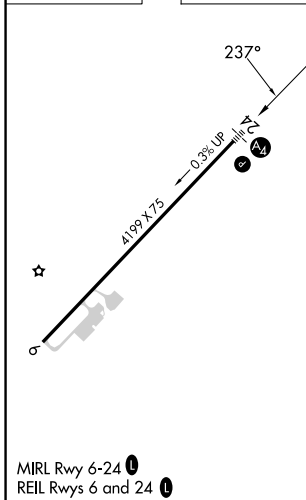
ALBERT S NADER RGNL (N66)

| | | | |
|-----------|---|------|--|
| RNP APCH. | When local altimeter setting not received, use Binghamton altimeter setting and increase LPV DA to 2313 feet, LNAV/VNAV DA to 2380 feet, and all MDAs 140 feet; increase LPV and LNAV/VNAV visibilities all Cats ½ SM. Baro-VNAV NA when using Binghamton altimeter setting. For uncompensated Baro-VNAV systems, LNAV/VNAV NA below -18°C or above 54°C. Rwy 6 helicopter visibility reduction below ¾ SM NA. Inop table does not apply. VDP NA when using Binghamton altimeter setting. Circling Rwy 6 NA at night. | MALS | MISSED APPROACH: Climb to 4500 direct WODIT and hold. |
|-----------|---|------|--|

| | | |
|--------------------------|--------------------------------------|---------------------------------|
| AWOS-3 119.575 | BOSTON CENTER 133.25 279.5 | UNICOM 122.8 (CTAF) 0 |
|--------------------------|--------------------------------------|---------------------------------|



| | |
|-----------|-----------|
| ELEV 1763 | TDZE 1758 |
|-----------|-----------|



| CATEGORY | A | B | C | D |
|--------------|---------|--------------|---|----|
| LPV DA | 2191-1½ | 433 (500-1½) | | NA |
| LNAV/VNAV DA | 2258-1¾ | 500 (500-1¾) | | NA |
| LNAV MDA | 2300-1 | 542 (600-1) | | NA |
| CIRCLING | 2380-1 | 617 (700-1) | | NA |

NE-2, 19 MAR 2026 to 16 APR 2026

NE-2, 19 MAR 2026 to 16 APR 2026