

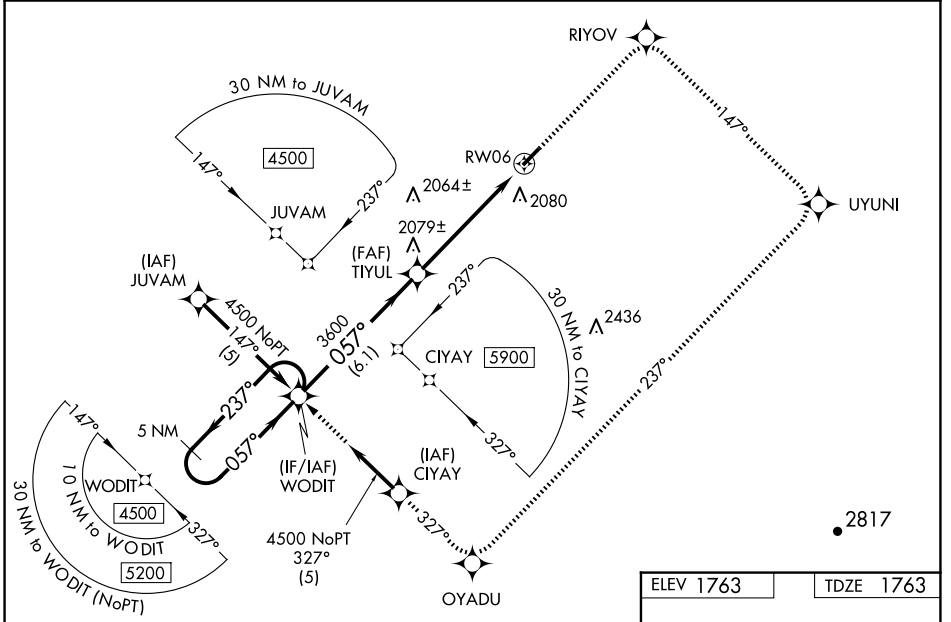
WAAS CH <b>86309</b> <b>W06A</b>	APP CRS <b>057°</b>	Rwy Ldg TDZE Apt Elev	<b>4199</b> <b>1763</b> <b>1763</b>
--	------------------------	-----------------------------	---

# RNAV (GPS) RWY 6

ALBERT S NADER RGNL (N66)

RNP APCH - GPS.	<p>When local altimeter setting not received, use Binghamton altimeter setting: increase LPV DA to 2197 feet, LNAV/VNAV DA to 2473 feet, and all MDAs 140 feet; increase LPV and LNAV/VNAV visibilities all Cats ½ SM. Baro-VNAV NA when using Binghamton altimeter setting. For uncompensated Baro-VNAV systems, LNAV/VNAV NA below -18°C or above 54°C. Rwy 6 helicopter visibility reduction below 1 SM NA. Procedure NA at night.</p>	<p>MISSED APPROACH: Climb to 4500 direct RIYOV and right turn on track 147° to UYUNI and right turn on track 237° to OYADU and on track 327° to WODIT and hold.</p>
-----------------	---	---

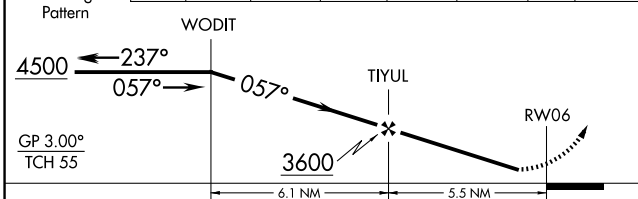
AWOS-3 <b>119.575</b>	BOSTON CENTER <b>133.25 279.5</b>	UNICOM <b>122.8 (CTAF) 0</b>
--------------------------	--------------------------------------	---------------------------------



NE-2, 19 MAR 2026 to 16 APR 2026

NE-2, 19 MAR 2026 to 16 APR 2026

5 NM Holding Pattern	4500	RIYOV	UYUNI	OYADU	WODIT
	↑	↻	↻	↻	↻
		tr 147°	tr 237°	tr 327°	



CATEGORY	A	B	C	D
LPV DA	2075-1	312 (400-1)		NA
LNAV/VNAV DA	2351-2	588 (600-2)		NA
LNAV MDA	2260-1	497 (500-1)		NA
CIRCLING	2380-1	617 (700-1)		NA

ELEV 1763	TDZE 1763
-----------	-----------

Diagram of RWY 6 showing a 0.5% UP slope and a 1:199 X 75 slope. The runway is 1200 feet long. A MIREL (Mandatory Intermediate Reporting Element) is located at the end of the runway. REIL (Runway End Identifier Lights) are present for RWys 6 and 24.