


WAAS CH <b>49000</b> <b>W21A</b>	APP CRS <b>205°</b>	Rwy Ldg TDZE Apt Elev	<b>5003</b> <b>1216</b> <b>1216</b>
--	------------------------	-----------------------------	---

# RNAV (GPS) RWY 21

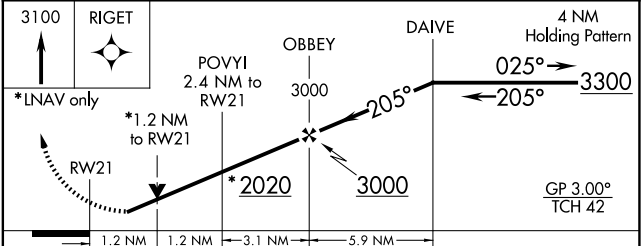
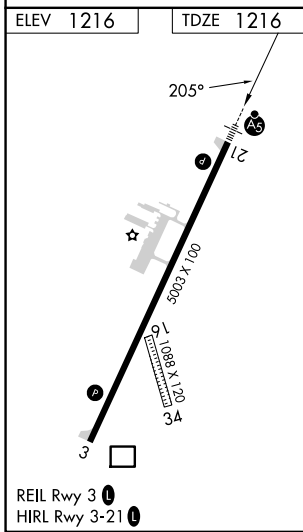
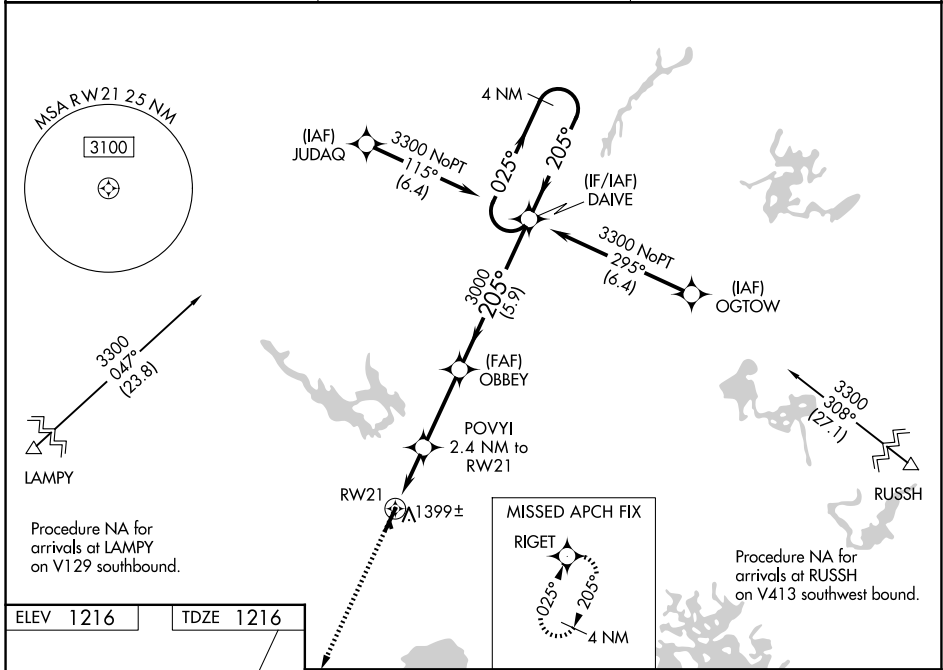
SAWYER COUNTY (HYR)

RNP APCH.

⚠ For uncompensated Baro-VNAV systems, LNAV/VNAV NA below -22°C (-7°F) or above 54°C (130°F). For inop MALSR, increase LNAV/VNAV all Cats visibility to 1 1/8 mile and LNAV Cat A and B visibility to 1 mile. Rwy 21 helicopter visibility reduction below 3/4 SM NA. Circling NA to Rwys 16 and 34.

MALSR  MISSED APPROACH: Climb to 3100 direct RIGET and hold.

ASOS <b>118.4</b>	MINNEAPOLIS CENTER <b>126.45 276.4</b>	UNICOM <b>122.8 (CTAF) 0</b>
----------------------	---	---------------------------------



CATEGORY	A	B	C	D
LPV DA		1518-3/4	302 (400-3/4)	
LNAV/VNAV DA		1560-3/4	344 (400-3/4)	
LNAV MDA		1640-3/4	424 (500-3/4)	
CIRCLING	1860-1 644 (700-1)	2060-1 1/4 844 (900-1 1/4)	2120-2 3/4 904 (1000-2 3/4)	2120-3 904 (1000-3)

EC-3, 19 MAR 2026 to 16 APR 2026

EC-3, 19 MAR 2026 to 16 APR 2026