

(BLTWY7.BLTWY) 21280

AL-5433 (FAA)

LA PORTE MUNI (T41)

BLTWY SEVEN DEPARTURE (RNAV)

LA PORTE, TEXAS

CLINC DEL
125.6
CTAF
122.7
HOUSTON DEP CON
134.45 284.0

**TOP ALTITUDE:
ASSIGNED BY ATC**

NOTE: RADAR required.
NOTE: DME/DME/IRU or GPS required.
NOTE: RNAV 1.

TAKEOFF MINIMUMS

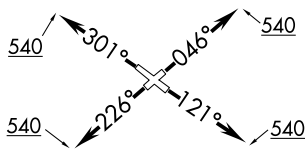
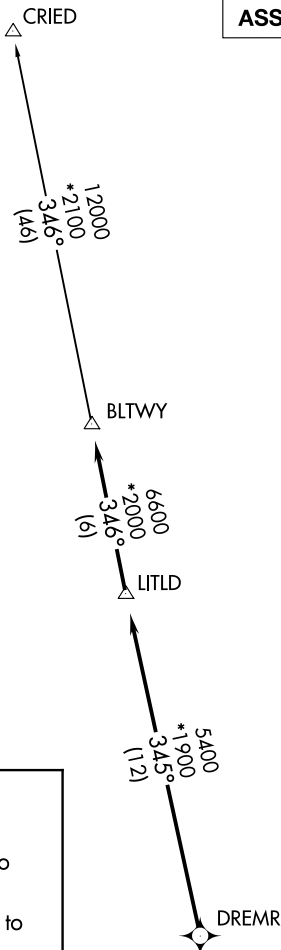
Rwys 5, 12, 23, 30:
Standard with minimum climb of 500' per NM to 540.

DEPARTURE ROUTE DESCRIPTION

- TAKEOFF RUNWAY 5: Climb on heading 046° to 540 for RADAR vectors to DREMR, thence . . .
- TAKEOFF RUNWAY 12: Climb on heading 121° to 540 for RADAR vectors to DREMR, thence . . .
- TAKEOFF RUNWAY 23: Climb on heading 226° to 540 for RADAR vectors to DREMR, thence . . .
- TAKEOFF RUNWAY 30: Climb on heading 301° to 540 for RADAR vectors to DREMR, thence . . .

...on track 345° to LITLD, then on track 346° to BLTWY, then on (transition). Maintain ATC assigned altitude. Expect filed altitude 10 minutes after departure.

CRIED TRANSITION (BLTWY7.CRIED)



NOTE: Chart not to scale.

BLTWY SEVEN DEPARTURE (RNAV)

(BLTWY7.BLTWY) 07OCT21

LA PORTE, TEXAS
LA PORTE MUNI (T41)

SC-5, 19 MAR 2026 to 16 APR 2026

SC-5, 19 MAR 2026 to 16 APR 2026