

BORRN SIX DEPARTURE (RNAV)

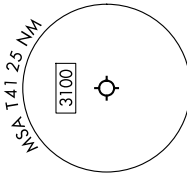
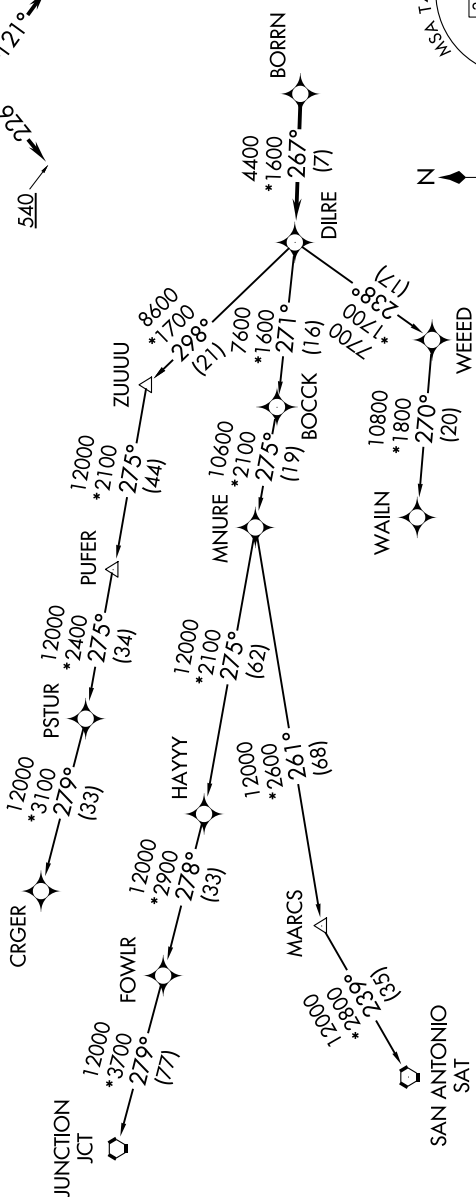
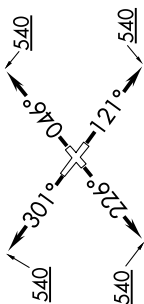
SC-5, 19 MAR 2026 to 16 APR 2026

CTAF
122.7
CLNC DEL
125.6
HOUSTON DEP CON
134.45 284.0

RNAV 1 - DME/DME/IRU or GPS.
RADAR required.

TOP ALTITUDE:
ASSIGNED BY ATC

TAKEOFF MINIMUMS
Rwy's 5, 12, 23, 30: Standard with minimum
climb of 500'/NM to 540.



NOTE: Chart not to scale.

NOTE: CRGR-TRANSITION ATC assigned only
for aircraft departing 54T, AXH, EFD, GLS,
HPY, IWS, LBX, LVJ, SGR, TME, T00, T41.

(CONTINUED ON FOLLOWING PAGE)

BORRN SIX DEPARTURE (RNAV)

SC-5, 19 MAR 2026 to 16 APR 2026