

# STRYA EIGHT DEPARTURE (RNAV)

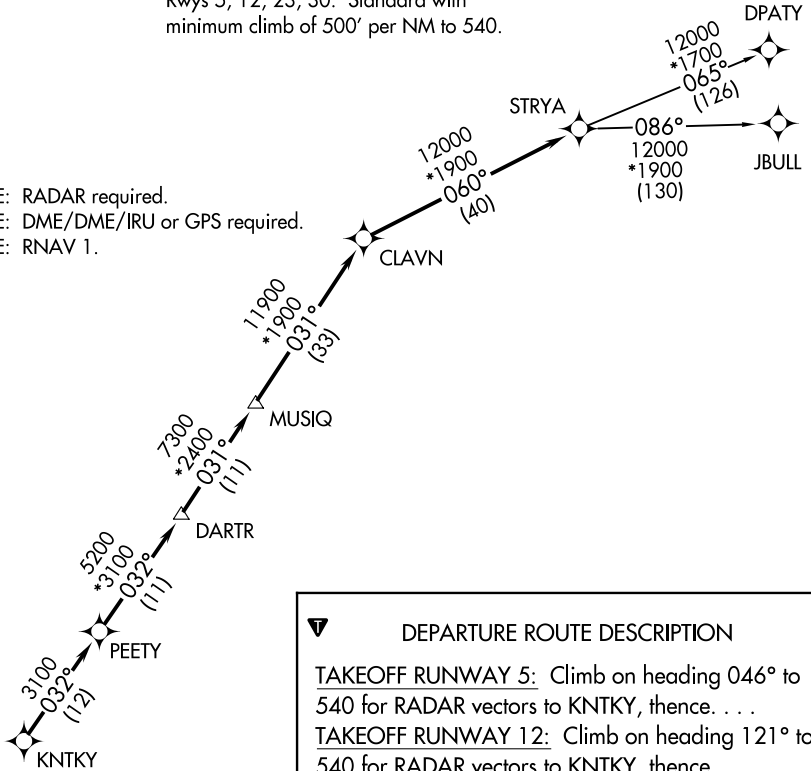
**TOP ALTITUDE: ASSIGNED BY ATC**

CTAF  
122.7  
CLNC DEL  
125.6  
HOUSTON DEP CON  
134.45 284.0

### TAKEOFF MINIMUMS

Rwys 5, 12, 23, 30: Standard with minimum climb of 500' per NM to 540.

NOTE: RADAR required.  
NOTE: DME/DME/IRU or GPS required.  
NOTE: RNAV 1.



**DEPARTURE ROUTE DESCRIPTION**

TAKEOFF RUNWAY 5: Climb on heading 046° to 540 for RADAR vectors to KNTKY, thence. . .

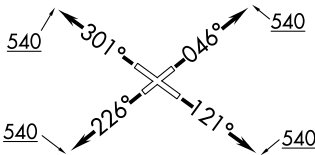
TAKEOFF RUNWAY 12: Climb on heading 121° to 540 for RADAR vectors to KNTKY, thence. . .

TAKEOFF RUNWAY 23: Climb on heading 226° to 540 for RADAR vectors to KNTKY, thence. . .

TAKEOFF RUNWAY 30: Climb on heading 301° to 540 for RADAR vectors to KNTKY, thence. . .

. . . on track 032° to PEETY, then on track 032° to DARTR, then on track 031° to MUSIQ, then on track 031° to CLAVN, then on track 060° to STRYA, then on (transition). Maintain ATC assigned altitude. Expect filed altitude 10 minutes after departure.

DPATY TRANSITION (STRYA8.DPATY)  
JBULL TRANSITION (STRYA8.JBULL)



NOTE: Chart not to scale.

SC-5, 19 MAR 2026 to 16 APR 2026

SC-5, 19 MAR 2026 to 16 APR 2026

# STRYA EIGHT DEPARTURE (RNAV)

(STRYA8.STRYA) 07OCT21