

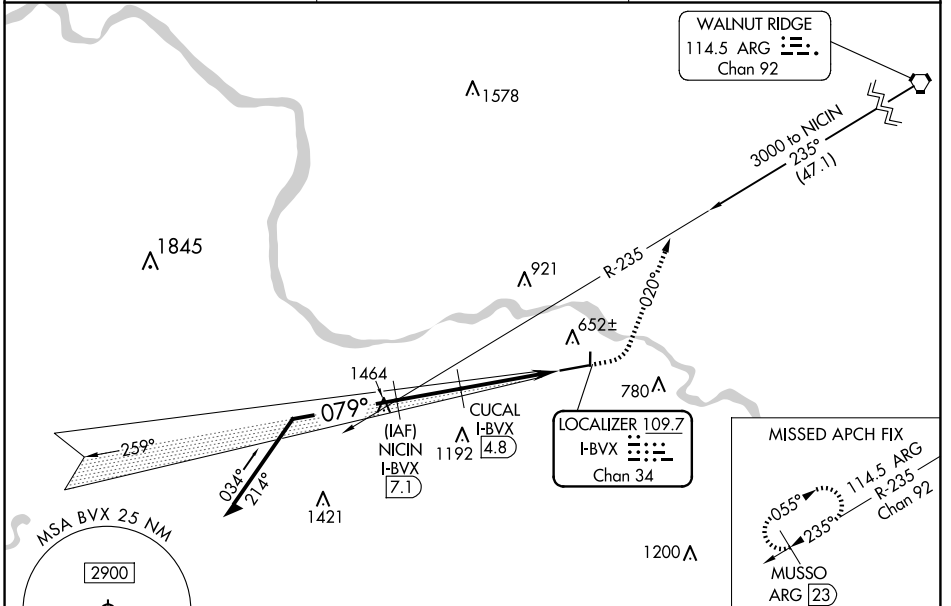
LOC/DME I-BVX <b>109.7</b> Chan <b>34</b>	APP CRS <b>079°</b>	Rwy Ldg TDZE Apt Elev	<b>6002</b> <b>463</b> <b>465</b>
---	------------------------	-----------------------------	---

# LOC RWY 8

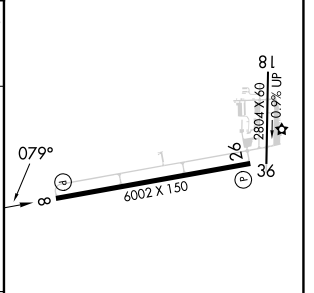
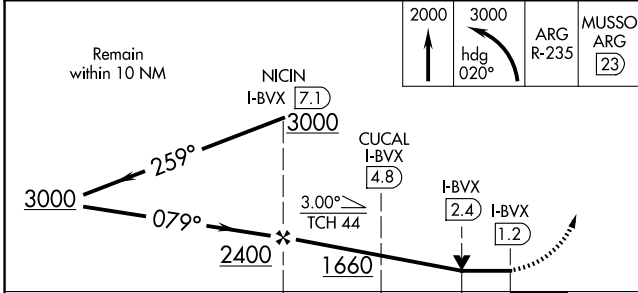
BATESVILLE RGNL (BVX)

DME required.	MISSED APPROACH: Climb to 2000 then climbing left turn to 3000 on heading 020° and on ARG VORTAC R-235 to MUSSO/ARG 23 DME and hold.
<p>▼ Circling NA north of Rwy 8-26. Circling Rwy 36 NA at night. Circling NA to Rwy 18.</p> <p>▲ NA</p>	

AWOS-3PT <b>126.375</b>	MEMPHIS CENTER <b>126.85 281.55</b>	UNICOM <b>122.8 (CTAF) 0</b>
----------------------------	--	---------------------------------



ELEV 465	TDZE 463
----------	----------



CATEGORY	A	B	C	D
S-8	880-1	417 (500-1)	880-1 1/8	417 (500-1 1/8)
CIRCLING	980-1 515 (600-1)	1000-1 535 (600-1)	1220-2 1/4 755 (800-2 1/4)	1440-3 975 (1000-3)

REIL Rwys 8 and 26	MIRL Rwy 8-26	FAF to MAP 6 NM			
Knots	60	90	120	150	180
Min:Sec	6:00	4:00	3:00	2:24	2:00

SC-1, 19 MAR 2026 to 16 APR 2026

SC-1, 19 MAR 2026 to 16 APR 2026