

# RNAV (GPS) RWY 26

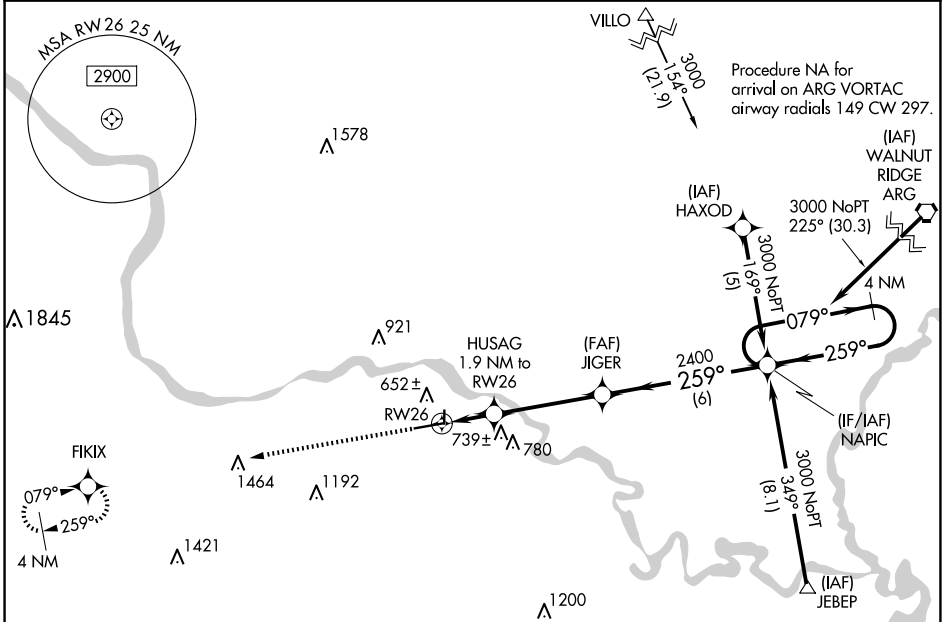
BATESVILLE RGNL (BVX)

APP CRS	Rwy Ldg	<b>6002</b>
<b>259°</b>	TDZE	<b>465</b>
	Apt Elev	<b>465</b>

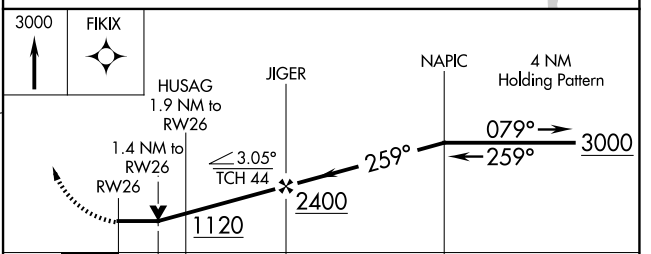
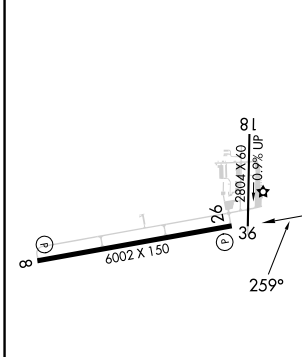
RNP APCH-GPS.  
 ⚠ Circling NA north of Rwy 8-26. Rwy 26 helicopter visibility reduction below ¾ SM NA.  
 ⚠ Circling NA Rwy 18. Circling Rwy 36 NA at night.

MISSED APPROACH: Climb to 3000 direct FIKIX and hold.

AWOS-3PT <b>126.375</b>	MEMPHIS CENTER <b>126.85 281.55</b>	UNICOM <b>122.8 (CTAF) 0</b>
----------------------------	--	---------------------------------



ELEV <b>465</b>	TDZE <b>465</b>
-----------------	-----------------



CATEGORY	A	B	C	D
LNAV MDA	940-1	475 (500-1)	940-1 3/8 475 (500-1 3/8)	940-1 1/2 475 (500-1 1/2)
CIRCLING	980-1 515 (600-1)	1000-1 535 (600-1)	1220-2 1/4 755 (800-2 1/4)	1440-3 975 (1000-3)

REIL Rwy 8 and 26  
 MIRL Rwy 8-26

SC-1, 19 MAR 2026 to 16 APR 2026

SC-1, 19 MAR 2026 to 16 APR 2026