

WAAS CH <b>42606</b> <b>W09A</b>	APP CRS <b>092°</b>	Rwy Ldg TDZE Apt Elev	<b>6500</b> <b>769</b> <b>770</b>
--	------------------------	-----------------------------	---

# RNAV (GPS) RWY 9

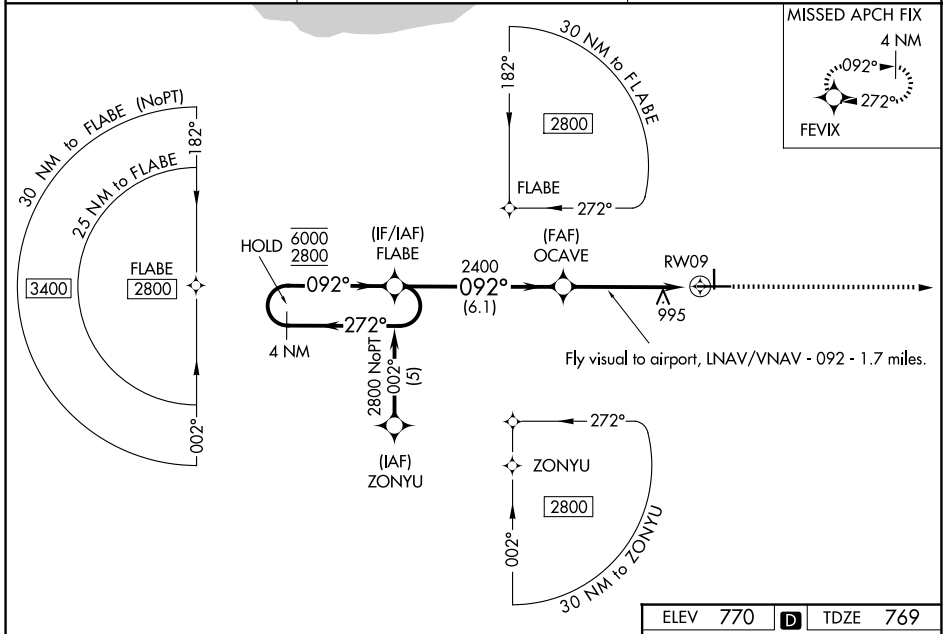
PORTER COUNTY RGNL (VPZ)

RNP APCH.

**⚠** Rwy 9 helicopter visibility reduction below 3/4 SM NA. For uncompensated Baro-VNAV systems, LNAV/VNAV NA below -16°C or above 47°C.

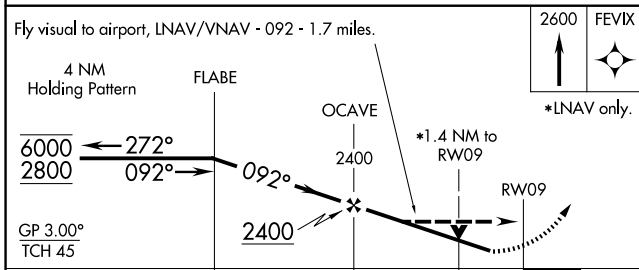
MISSED APPROACH:  
Climb to 2600 direct FEVIX and hold.

ASOS <b>125.875</b>	SOUTH BEND APP CON ★ <b>132.05 257.8</b>	UNICOM <b>122.725 (CTAF) 0</b>
------------------------	---	-----------------------------------



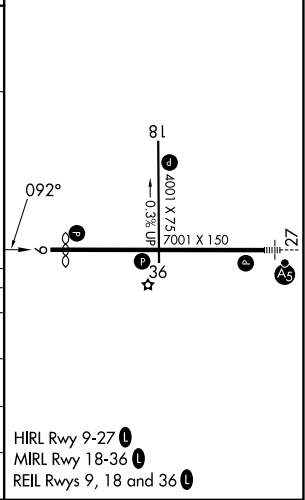
EC-2, 19 MAR 2026 to 16 APR 2026

EC-2, 19 MAR 2026 to 16 APR 2026



ELEV 770	<b>D</b>	TDZE 769
----------	----------	----------

CATEGORY	A	B	C	D
LPV DA		1038-1	269 (300-1)	
LNAV/VNAV DA		1369-2	600 (600-2)	
LNAV MDA	1260-1	491 (500-1)	1260-1½ 491 (500-1½)	1260-1½ 491 (500-1½)
CIRCLING	1260-1 490 (500-1)	1300-1 530 (600-1)	1360-1½ 590 (600-1½)	1620-2¾ 850 (900-2¾)



HIRL Rwy 9-27  
MIRL Rwy 18-36  
REIL Rws 9, 18 and 36