

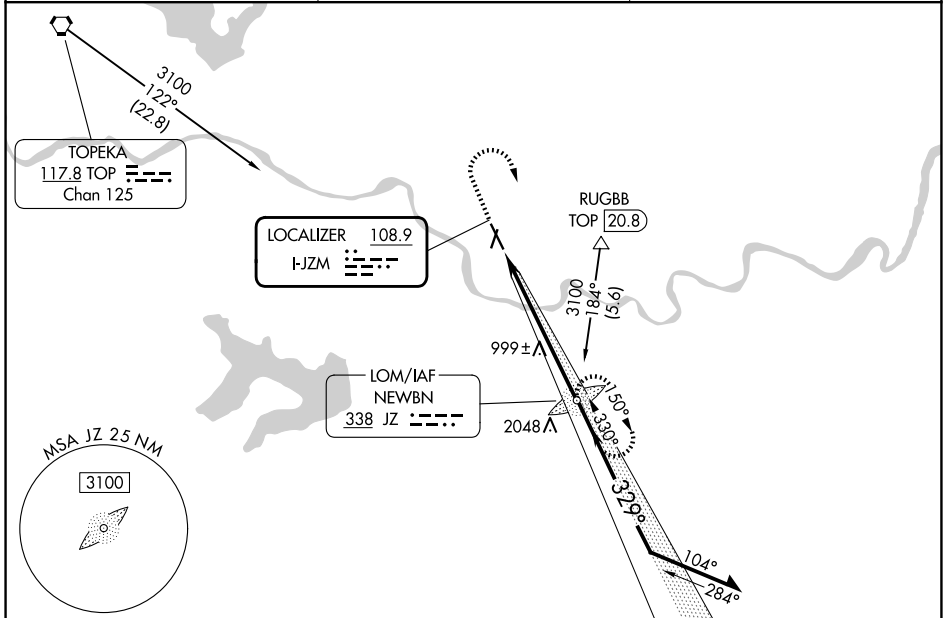
LOC I-JZM <b>108.9</b>	APP CRS <b>329°</b>	Rwy Ldg <b>5701</b> TDZE <b>831</b> Apt Elev <b>833</b>
---------------------------	------------------------	---

# ILS or LOC RWY 33

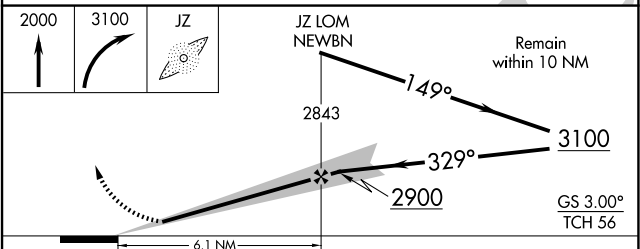
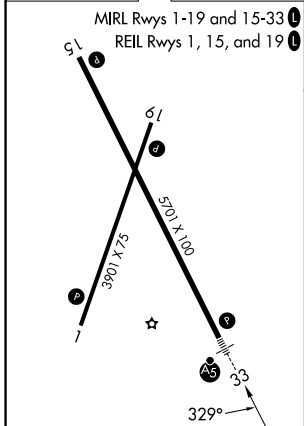
LAWRENCE RGNL (LWC)

ADF required.	MALSRL 	MISSED APPROACH: Climb to 2000 then climbing right turn to 3100 direct NEWBN LOM and hold.
When local altimeter setting not received, use TOP altimeter setting and increase DA to 1083 feet; increase all MDAs 60 feet and S-LOC 33 and Circling visibility Cat C ¼ SM.		

ASOS <b>121.225</b>	KANSAS CITY CENTER <b>123.8 343.7</b>	UNICOM <b>123.0 (CTAF)</b>
------------------------	--	-------------------------------



ELEV 833	TDZE 831
----------	----------



CATEGORY	A	B	C	D
S-ILS 33	1031-½ 200 (200-½)			NA
S-LOC 33	1260-½ 429 (500-½)		1260-¾ 429 (500-¾)	NA
CIRCLING	1420-1 587 (600-1)	1480-1 647 (700-1)	1620-2¼ 787 (800-2¼)	NA

FAF to MAP 6.1 NM					
Knots	60	90	120	150	180
Min:Sec	6:06	4:04	3:03	2:26	2:02

NC-2, 19 MAR 2026 to 16 APR 2026

NC-2, 19 MAR 2026 to 16 APR 2026