

WAAS CH 70538 W17A	APP CRS 168°	Rwy Ldg 5010 TDZE 943 Apt Elev 951
--	------------------------	---

RNAV (GPS) RWY 17

JACKSON COUNTY (JCA)

RNP APCH-GPS.

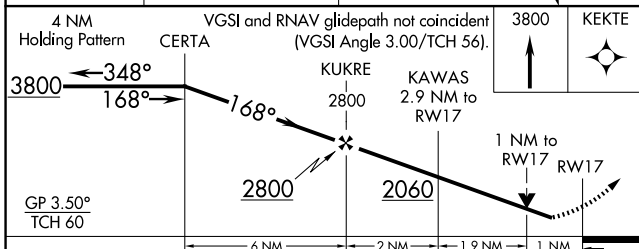
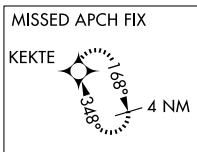
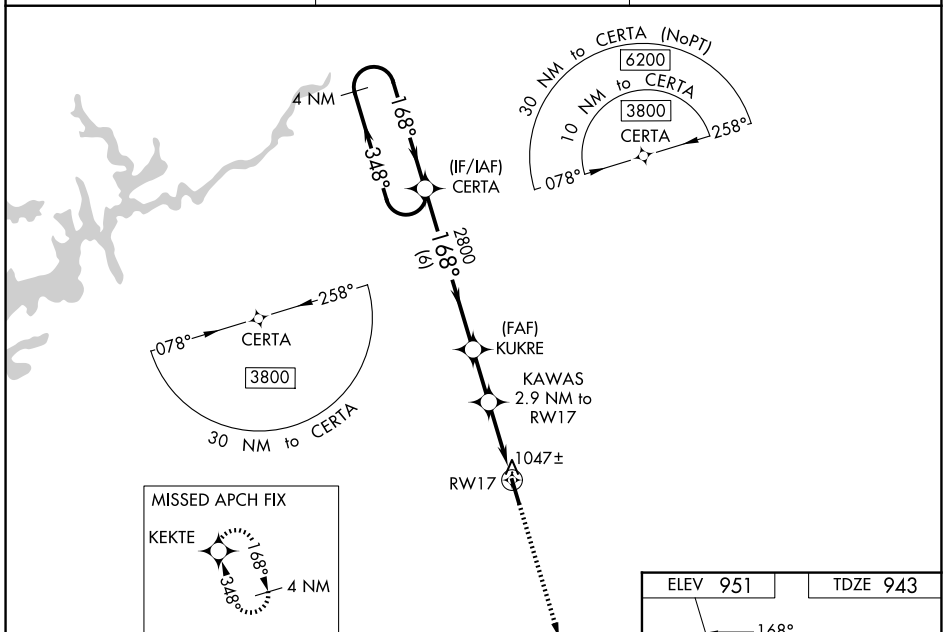
⚠ For uncompensated Baro-VNAV systems, LNAV/VNAV NA below -16°C or above 53°C.
⚠ Circling NA for Cat D west of Rwy 17-35. Baro-VNAV and VDP NA when using Winder altimeter setting. Rwy 17 helicopter visibility reduction below 3/4 SM NA. When local altimeter setting not received, use Winder altimeter setting; increase LPV DA to 1310 feet; increase LNAV/VNAV DA to 1363 feet; increase all MDAs 40 feet and LNAV visibility Cats C/D 1/8 SM.

MISSED APPROACH: Climb to 3800 direct KEKTE and hold.

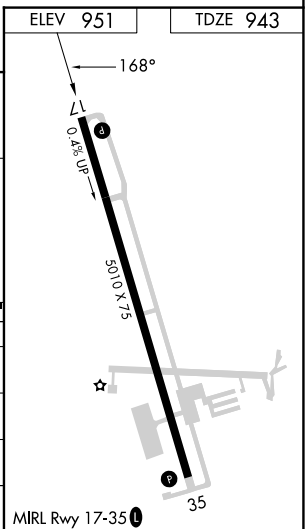
AWOS-3PT
118.125

ATLANTA APP CON *
132.475 291.1

UNICOM
122.975 (CTAF) **L**



CATEGORY	A	B	C	D
LPV DA	1279-1	336 (400-1)		NA
LNAV/VNAV DA	1332-1 1/8	389 (400-1 1/8)		NA
LNAV MDA	1320-1	377 (400-1)		
CIRCLING	1440-1	489 (500-1)	1580-1 3/4 629 (700-1 3/4)	1580-2 629 (700-2)



SE-4, 19 MAR 2026 to 16 APR 2026

SE-4, 19 MAR 2026 to 16 APR 2026