

WAAS CH 82704 W35A	APP CRS 348°	Rwy Ldg 5010 TDZE 951 Apt Elev 951
--	------------------------	---

RNAV (GPS) RWY 35

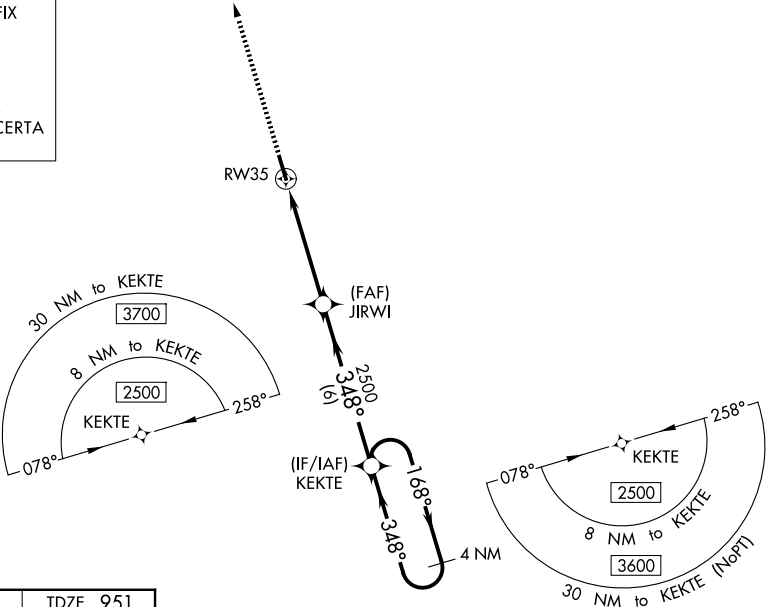
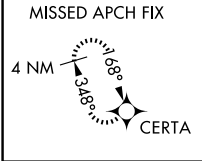
JACKSON COUNTY (JCA)

RNP APCH-GPS.

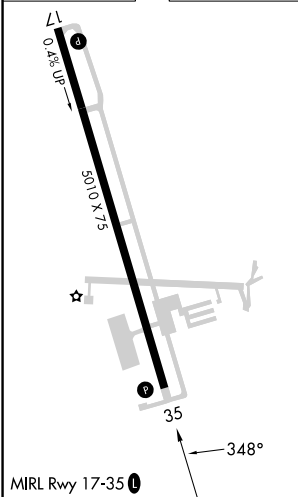
⚠ For uncompensated Baro-VNAV systems, LNAV/VNAV NA below -16°C or above 54°C.
⚠ Circling NA for Cat D west of Rwy 17-35. Baro-VNAV and VDP NA when using Winder altimeter setting. Rwy 35 helicopter visibility reduction below ¼ SM NA. When local altimeter setting not received, use Winder altimeter setting; increase LPV DA to 1232 feet and visibility all Cats ½ SM; increase LNAV/VNAV DA to 1241 feet and visibility all Cats ½ SM; increase all MDAs 40 feet and LNAV visibility Cats C/D ½ SM.

MISSED APPROACH:
Climb to 3700 direct CERTA and hold.

AWOS-3PT 118.125	ATLANTA APP CON* 132.475 291.1	UNICOM 122.975 (CTAF) ①
----------------------------	--	-----------------------------------



ELEV 951	TDZE 951
----------	----------



3700	CERTA	4 NM Holding Pattern			
		JIRWI 2500	KEKTE 2500		
		1.1 NM to RW35	168° → 2500		
		1.1 NM	← 348° 2500		
		3.6 NM	GP 3.00° TCH 54		
		6 NM			
CATEGORY	A	B	C	D	
LPV DA		1201-7/8	250 (300-7/8)		
LNAV/VNAV DA		1210-7/8	259 (300-7/8)		
LNAV MDA	1340-1	389 (400-1)		1340-1 1/8	389 (400-1 1/8)
CIRCLING	1440-1	489 (500-1)		1580-1 3/4	1580-2
				629 (700-1 3/4)	629 (700-2)

SE-4, 19 MAR 2026 to 16 APR 2026

SE-4, 19 MAR 2026 to 16 APR 2026