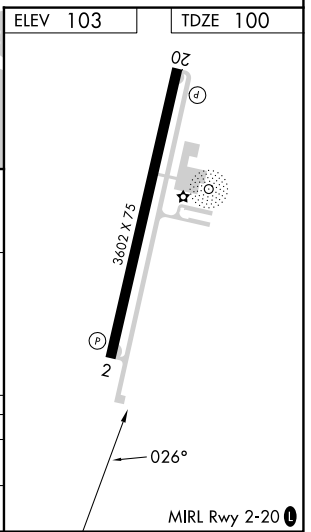
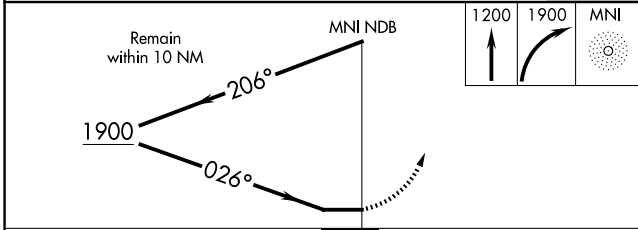
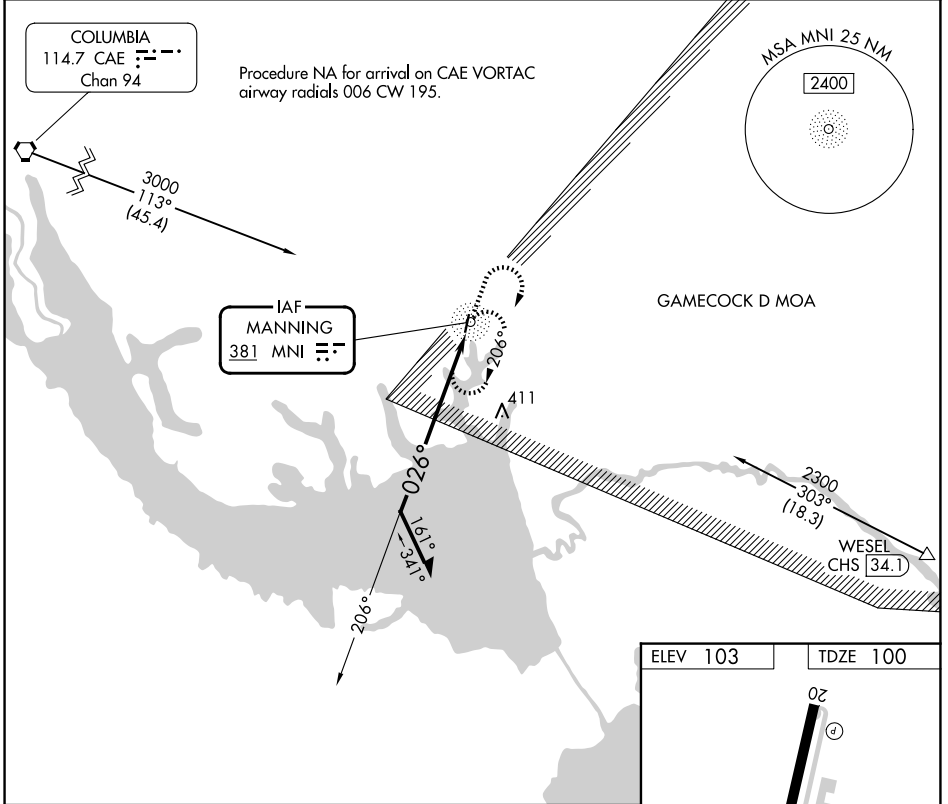


NDB MNI <b>381</b>	APP CRS <b>026°</b>	Rwy Ldg TDZE Apt Elev <b>3602</b> <b>100</b> <b>103</b>
-----------------------	------------------------	--

**NDB RWY 2**  
SANTEE COOPER RGNL (MNI)

<p><b>▼</b> Rwy 2 helicopter visibility reduction below 1 SM NA. Procedure NA at night.</p> <p><b>▲</b> NA</p>	<p>MISSED APPROACH: Climb to 1200, then climbing right turn to 1900 direct MNI NDB and hold, continue climb-in-hold to 1900.</p>
--	--

<p>AWOS-3 <b>120.175</b></p>	<p>SHAW APP CON★ <b>125.4 318.1</b></p>	<p>UNICOM <b>122.8 (CTAF) 0</b></p>
----------------------------------	---	---



CATEGORY	A	B	C	D
S-2	660-1	560 (600-1)	660-1½	560 (600-1½)
CIRCLING	660-1	557 (600-1)	800-2 697 (700-2)	800-2¼ 697 (700-2¼)

SE-2, 19 MAR 2026 to 16 APR 2026

SE-2, 19 MAR 2026 to 16 APR 2026