

BORRN SIX DEPARTURE (RNAV)

HOUSTON, TEXAS

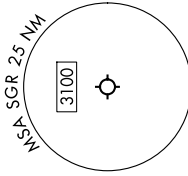
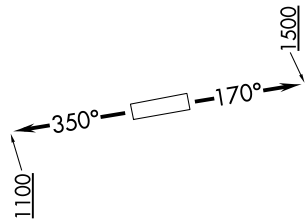
SC-5, 19 MAR 2026 to 16 APR 2026

TOP ALTITUDE:  
ASSIGNED BY ATC

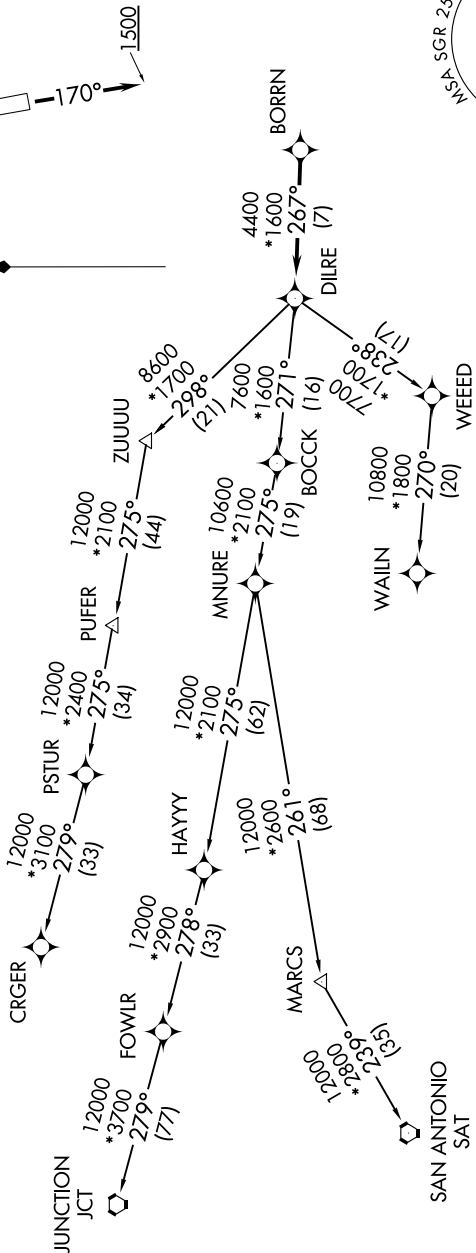
RNAV 1 - DME/DME/IRU or GPS.  
RADAR required.

ATIS 118.125  
CLNC DEL 121.4  
CLNC DEL (When twr closed) 119.25  
GND CON 121.4  
SUGAR LAND TOWER\* 118.65 (CTAF)  
HOUSTON DEP CON 123.8 257.7

TAKEOFF MINIMUMS  
Rwys 17, 35: Standard with minimum climb of 500'/NM to 600.



NOTE: Chart not to scale.



NOTE: CRGR-TRANSITION ATC assigned only for aircraft departing 54T, AXH, EFD, GLS, HPY, IWS, LBX, LVJ, SGR, TME, T00, T41.

(CONTINUED ON FOLLOWING PAGE)

SC-5, 19 MAR 2026 to 16 APR 2026

BORRN SIX DEPARTURE (RNAV)

(BORRN6.BORRN) 30NOV23

HOUSTON, TEXAS

SUGAR LAND RGNL (SGR)