

# CRIED ONE DEPARTURE

AL-5537 (FAA)

SUGAR LAND RGNL (SGR)

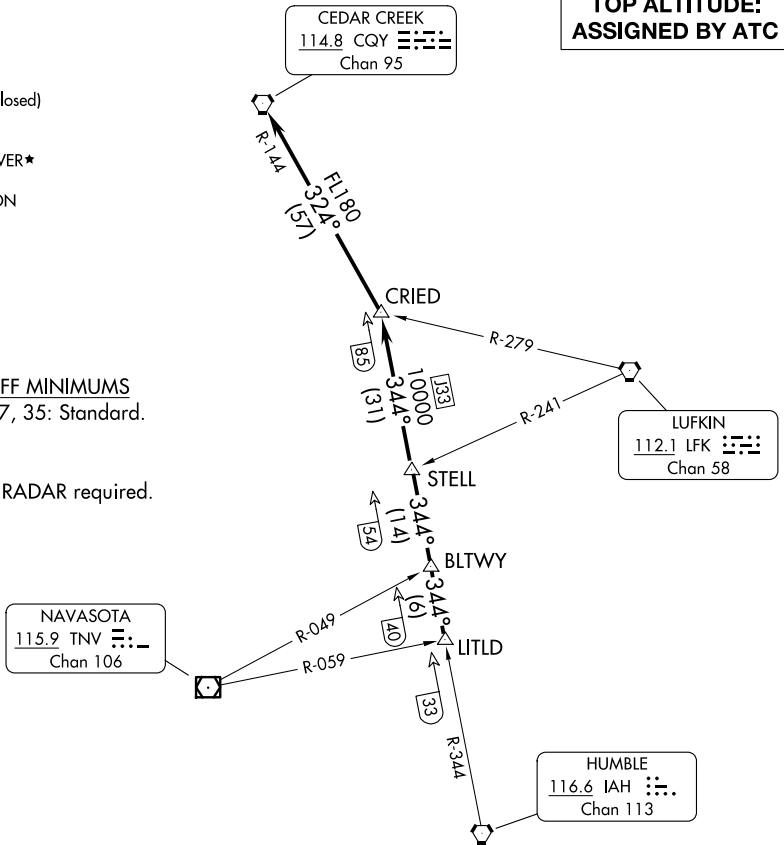
HOUSTON, TEXAS

ATIS  
 118.125  
 CLNC DEL  
 121.4  
 CLNC DEL  
 119.25 (when twr closed)  
 GND CON  
 121.4  
 SUGAR LAND TOWER\*  
 118.65 (CTAF)  
 HOUSTON DEP CON  
 123.8 257.7

**TOP ALTITUDE:  
 ASSIGNED BY ATC**

TAKEOFF MINIMUMS  
 Rwys 17, 35: Standard.

NOTE: RADAR required.



SC-5, 19 MAR 2026 to 16 APR 2026

SC-5, 19 MAR 2026 to 16 APR 2026

(CONTINUED ON FOLLOWING PAGE)

NOTE: Chart not to scale.

# CRIED ONE DEPARTURE

HOUSTON, TEXAS

SUGAR LAND RGNL (SGR)