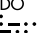


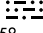
# EL DORADO ONE DEPARTURE


ATIS  
 118.125  
 CLNC DEL  
 121.4  
 CLNC DEL  
 119.25 (when twr closed)  
 GND CON  
 121.4  
 SUGAR LAND TOWER ★  
 118.65 (CTAF)  
 HOUSTON DEP CON  
 123.8 257.7

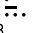
**TOP ALTITUDE:  
ASSIGNED BY ATC**

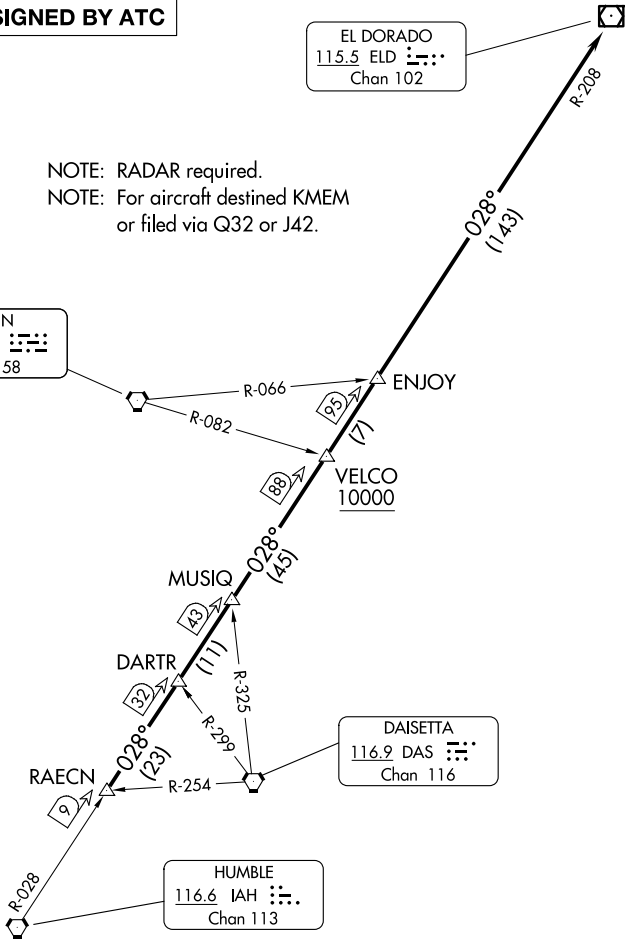
EL DORADO  
 115.5 ELD   
 Chan 102

NOTE: RADAR required.  
 NOTE: For aircraft destined KMEM  
 or filed via Q32 or J42.

LUFKIN  
 112.1 LFK   
 Chan 58

DAISSETA  
 116.9 DAS   
 Chan 116

HUMBLE  
 116.6 IAH   
 Chan 113



TAKEOFF MINIMUMS  
 Rwy 17, 35: Standard.

NOTE: Chart not to scale.

(CONTINUED ON FOLLOWING PAGE)

SC-5, 19 MAR 2026 to 16 APR 2026

SC-5, 19 MAR 2026 to 16 APR 2026