

KARR SEVEN DEPARTURE (RNAV)

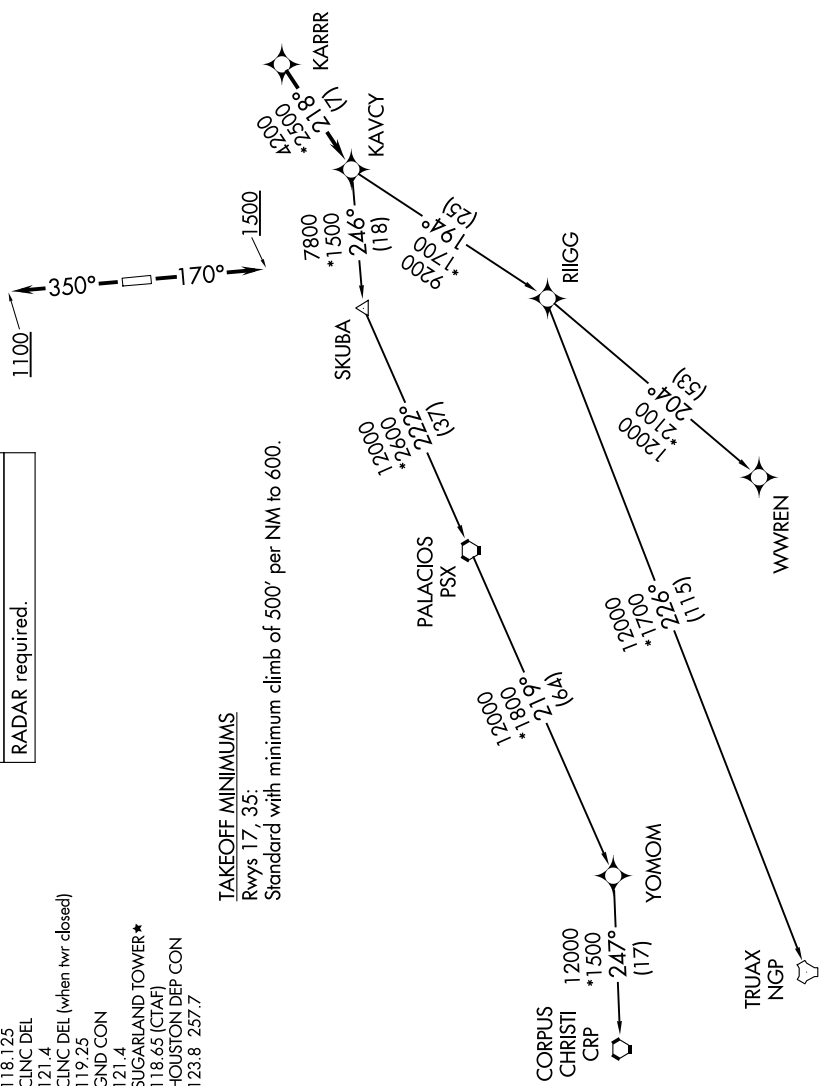
**TOP ALTITUDE:
ASSIGNED BY ATC**

RNAV-1 DME/DME/IRU or GPS.
RADAR required.

ATIS 118.125
CLNC DEL 121.4
CLNC DEL (when hwr closed) 119.25
GND CON 121.4
SUGARLAND TOWER* 118.65 (CTAF)
HOUSTON DEP CON 123.8 257.7

TAKEOFF MINIMUMS

Rwys 17, 35:
Standard with minimum climb of 500' per NM to 600.



(CONTINUED ON FOLLOWING PAGE)

NOTE: Chart not to scale.