

VORTAC MLU <b>117.2</b> Chan <b>119</b>	APP CRS <b>026°</b>	Rwy Ldg TDZE Apt Elev <b>N/A</b> <b>N/A</b> <b>168</b>
---	------------------------	--

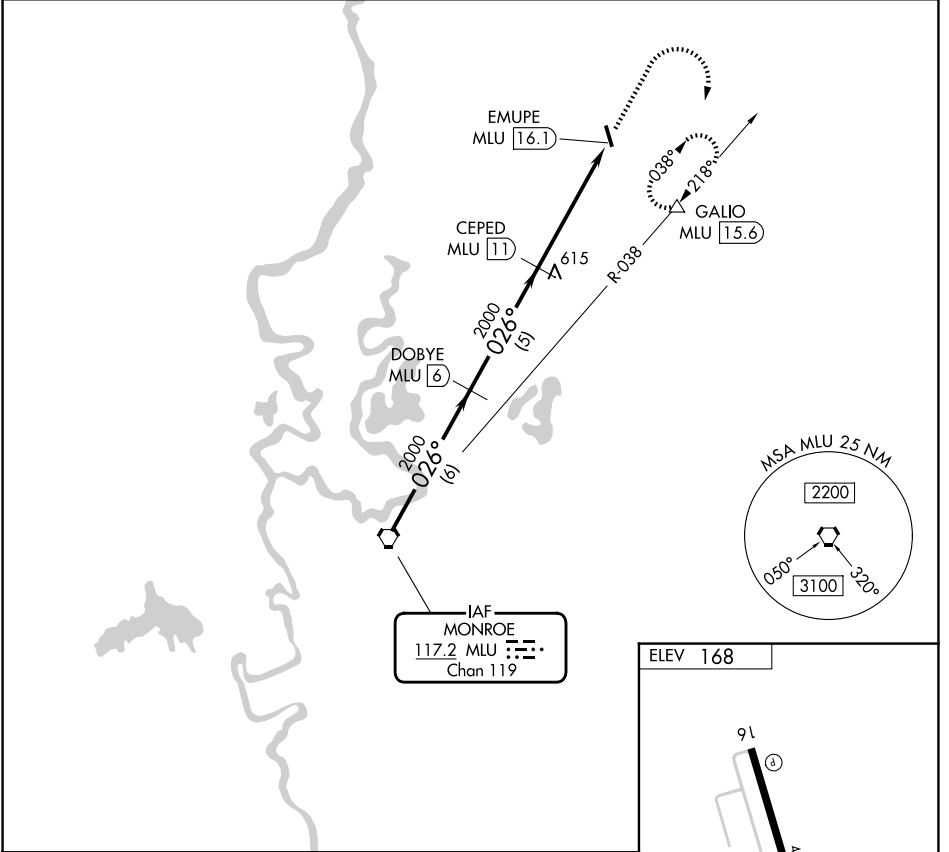
# VOR/DME-A

MOREHOUSE MEML (BQP)

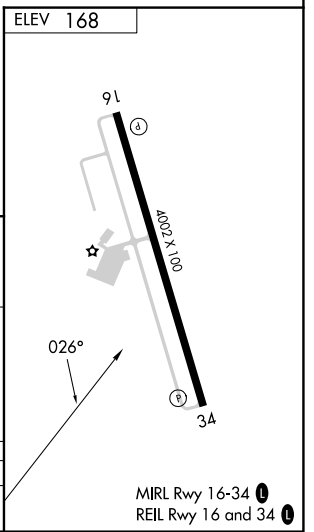
**NA** When local altimeter setting not received, use Monroe altimeter setting and increase all MDA 60 feet and Cat C visibility 1/4 mile.

**MISSED APPROACH:** Climb to 2000 then climbing right turn to 3000 via MLU R-038 to GALIO/MLU 15.6 DME and hold.

AWOS-3PT <b>118.375</b>	MONROE APP CON* <b>126.9 307.9</b>	UNICOM <b>122.8 (CTAF)</b>
----------------------------	---------------------------------------	-------------------------------



	MLU VORTAC	DOBYE MLU 6	CEPED MLU 11	2000	3000	GALIO
				↑	↷ MLU R-038	△
Procedure Turn NA	2000	2000	2000	EMUPE MLU 16.1		
	6 NM		5 NM	5.1 NM		
CATEGORY	A	B	C	D		
CIRCLING	720-1 552 (600-1)	780-1 612 (700-1)	820-1 1/4 652 (700-1 1/4)	NA		



MIRL Rwy 16-34  
REIL Rwy 16 and 34

SC-4, 19 MAR 2026 to 16 APR 2026

SC-4, 19 MAR 2026 to 16 APR 2026