

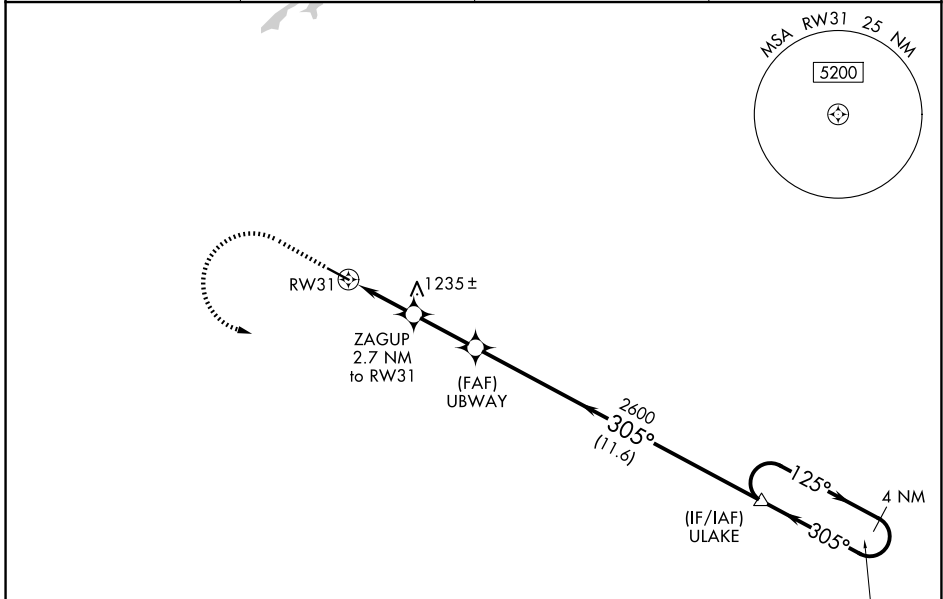
WAAS CH 65802 W31A	APP CRS 305°	Rwy Ldg TDZE 925 Apt Elev 941	5002
--	------------------------	---	-------------

RNAV (GPS) RWY 31

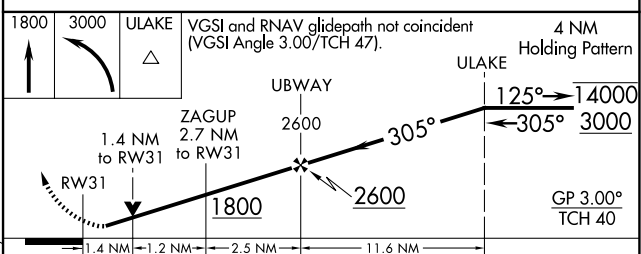
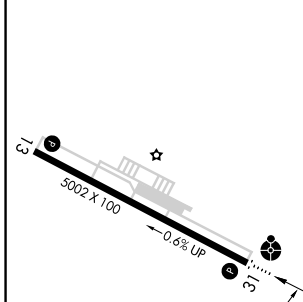
BLUE RIDGE (MTV)

RNP APCH - GPS.	ODALS	MISSED APPROACH: Climb to 1800, then climbing left turn to 3000 direct ULAKE and hold.
<p>▼ Rwy 31 helicopter visibility reduction below 3/4 SM NA. Inop table does not apply to LPV and LNAV/VNAV all Cats. For uncompensated Baro-VNAV systems, LNAV/VNAV NA below -16°C or above 54°C.</p> <p>⚠ -16°C</p>		

AWOS-3 118.45	GREENSBORO APP CON 124.35 269.225	CLNC DEL 124.85	UNICOM 122.7 (CTAF) 0
-------------------------	---	---------------------------	---------------------------------



ELEV 941	TDZE 925
-----------------	-----------------



CATEGORY	A	B	C	D
LPV DA		1175-3/4	250 (300-3/4)	
LNAV/VNAV DA		1432-1 3/8	507 (500-1 3/8)	
LNAV MDA	1420-3/4	495 (500-3/4)	1420-1/4	495 (500-1 1/4)
CIRCLING	1420-1 479 (500-1)	1440-1 499 (500-1)	1540-1 1/2 599 (600-1 1/2)	1800-2 3/4 859 (900-2 3/4)

MIRL Rwy 13-31 0
REIL Rwy 13 and 31 0

MARTINSVILLE, VIRGINIA
Amdt 3B 21MAR24

36°38'N-80°01'W

BLUE RIDGE (MTV)

RNAV (GPS) RWY 31

NE-3, 19 MAR 2026 to 16 APR 2026

NE-3, 19 MAR 2026 to 16 APR 2026