

WAAS CH <b>77837</b> <b>W19A</b>	APP CRS <b>188°</b>	Rwly Ldg TDZE Apt Elev	<b>4501</b> <b>67</b> <b>67</b>
--	------------------------	------------------------------	---------------------------------------

# RNAV (GPS) RWY 19

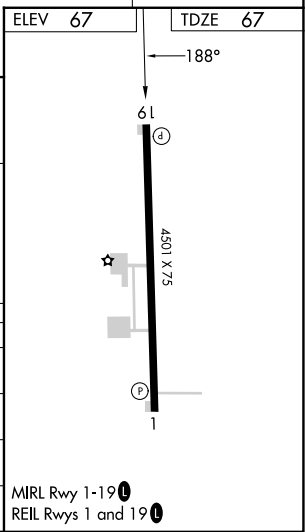
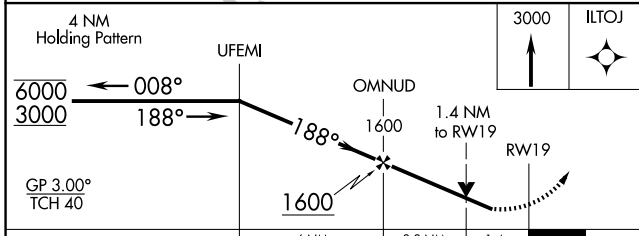
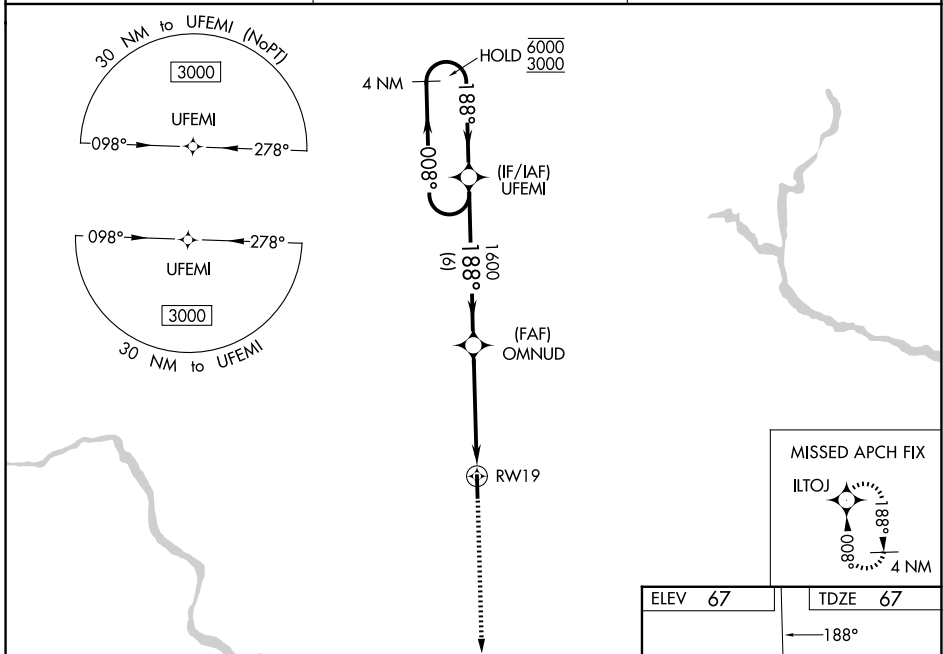
TRI-COUNTY AT HENRY JOYNER FLD (ASJ)

RNP APCH - GPS.

⚠ Circling Rwy 1 NA at night. For uncompensated Baro-VNAV systems, LNAV/VNAV NA below -15°C or above 54°C. Rwy 19 helicopter visibility reduction below ¾ SM NA.  
 ⚠ Baro-VNAV and VDP NA when using FKN altimeter setting. When local altimeter setting not received, use FKN altimeter setting and increase LPV DA to 434 feet; increase LNAV/VNAV DA to 515 feet and all visibilities ¾ SM. Increase all MDAs 80 feet and LNAV visibility Cat C/D ¼ SM, and Circling visibility Cat C/D ¼ SM.

MISSED APPROACH: Climb to 3000 direct ILTOJ and hold, continue climb-in-hold to 3000.

AWOS-3 <b>119.075</b>	WASHINGTON CENTER <b>123.85 279.65</b>	UNICOM <b>122.8 (CTAF) 0</b>
--------------------------	---	---------------------------------



CATEGORY	A	B	C	D
LPV DA		365-1	298 (300-1)	
LNAV/VNAV DA		446-1	379 (400-1)	
LNAV MDA	540-1	473 (500-1)	540-1 3/8	473 (500-1 3/8)
CIRCLING	540-1	473 (500-1)	540-1 1/2	820-2 1/2
			473 (500-1 1/2)	753 (800-2 1/2)

MIRL Rwy 1-19 0  
 REIL Rwy 1 and 19 0

SE-2, 19 MAR 2026 to 16 APR 2026

SE-2, 19 MAR 2026 to 16 APR 2026