

KUSSO TWO DEPARTURE (RNAV)

SC-2, 19 MAR 2026 to 16 APR 2026

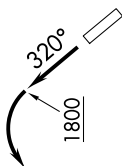
LONE STAR DEP CON
125.2 343.65
CTAF
122.7

RNAV 1 - DME/DME/IRU or GPS.
RADAR required.

TOP ALTITUDE:
ASSIGNED BY ATC

TAKEOFF MINIMUMS

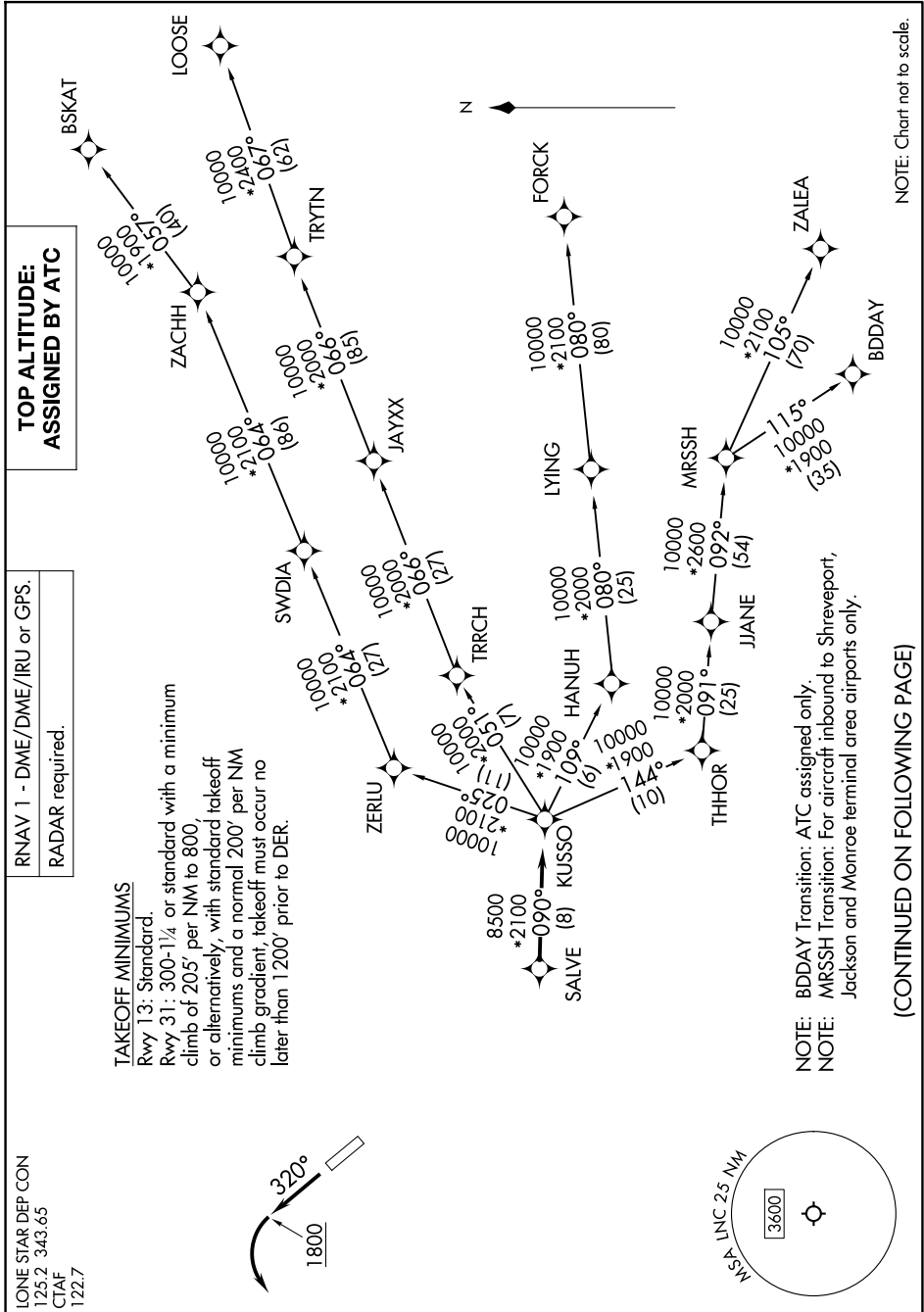
Rwy 13: Standard.
Rwy 31: 300-1/4 or standard with a minimum climb of 205' per NM to 800 or alternatively, with standard takeoff minimums and a normal 200' per NM climb gradient, takeoff must occur no later than 1200' prior to DER.



KUSSO TWO DEPARTURE (RNAV)

(KUSSO2.KUSSO) 22JAN26

LANCASTER, TEXAS
LANCASTER RGNL (LNC)



NOTE: BDDAY Transition: ATC assigned only.
NOTE: MRSSH Transition: For aircraft inbound to Shreveport, Jackson and Monroe terminal area airports only.

(CONTINUED ON FOLLOWING PAGE)

NOTE: Chart not to scale.

SC-2, 19 MAR 2026 to 16 APR 2026