

TEXOMA FIVE DEPARTURE

LONE STAR DEP CON
125.2 343.65
CTAF
122.7

**TOP ALTITUDE:
ASSIGNED BY ATC**

TULSA
114.4 TUL
Chan 91

RADAR and DME required.

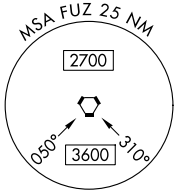
WILL ROGERS
114.1 IRW
Chan 88

OKMULGEE
114.9 OKM
Chan 96

ARDMORE
116.7 ADM
Chan 114

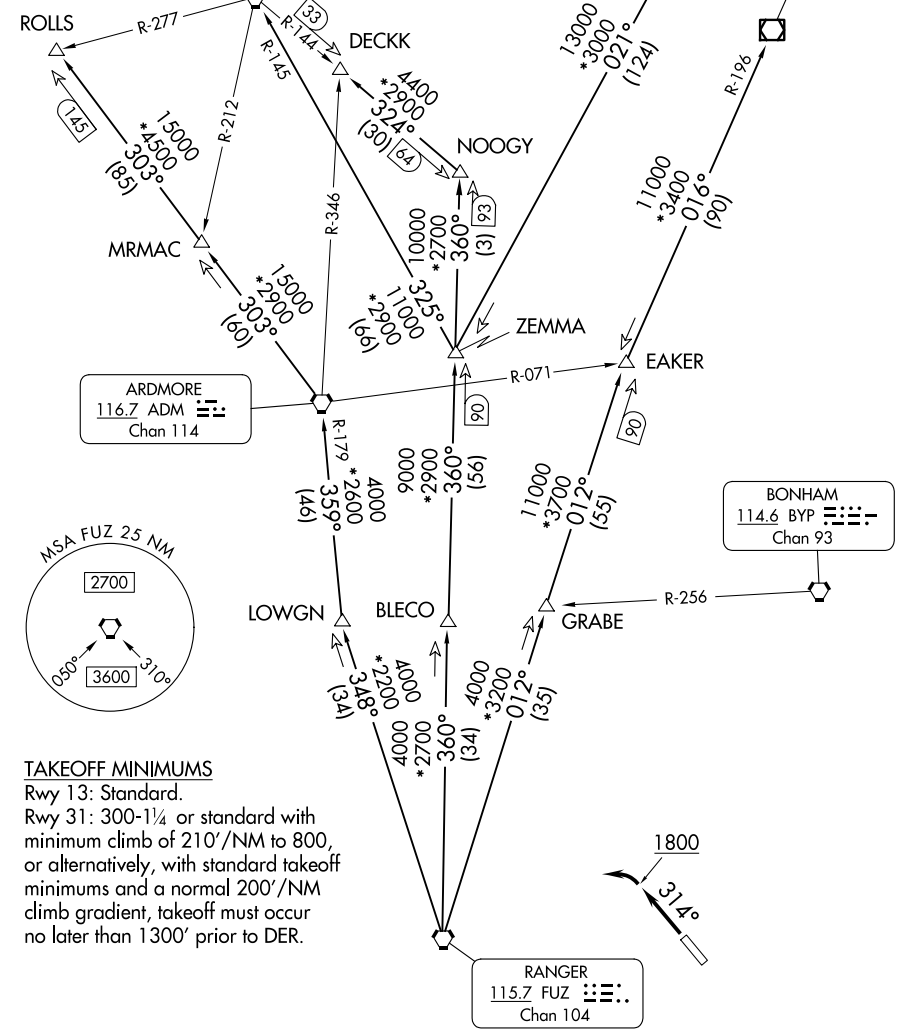
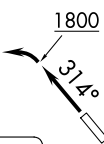
BONHAM
114.6 BYP
Chan 93

RANGER
115.7 FUZ
Chan 104



TAKEOFF MINIMUMS

Rwy 13: Standard.
 Rwy 31: 300-1/4 or standard with minimum climb of 210'/NM to 800, or alternatively, with standard takeoff minimums and a normal 200'/NM climb gradient, takeoff must occur no later than 1300' prior to DER.



NOTE: Chart not to scale.

(CONTINUED ON FOLLOWING PAGE)

SC-2, 19 MAR 2026 to 16 APR 2026

SC-2, 19 MAR 2026 to 16 APR 2026

TEXOMA FIVE DEPARTURE