

LOWGN EIGHT DEPARTURE (RNAV)

**TOP ALTITUDE:**  
**RWYS 31L/R: 5000**  
**RWYS 17C/R, 18L/R, 35L/C, 36L/R: 10000**

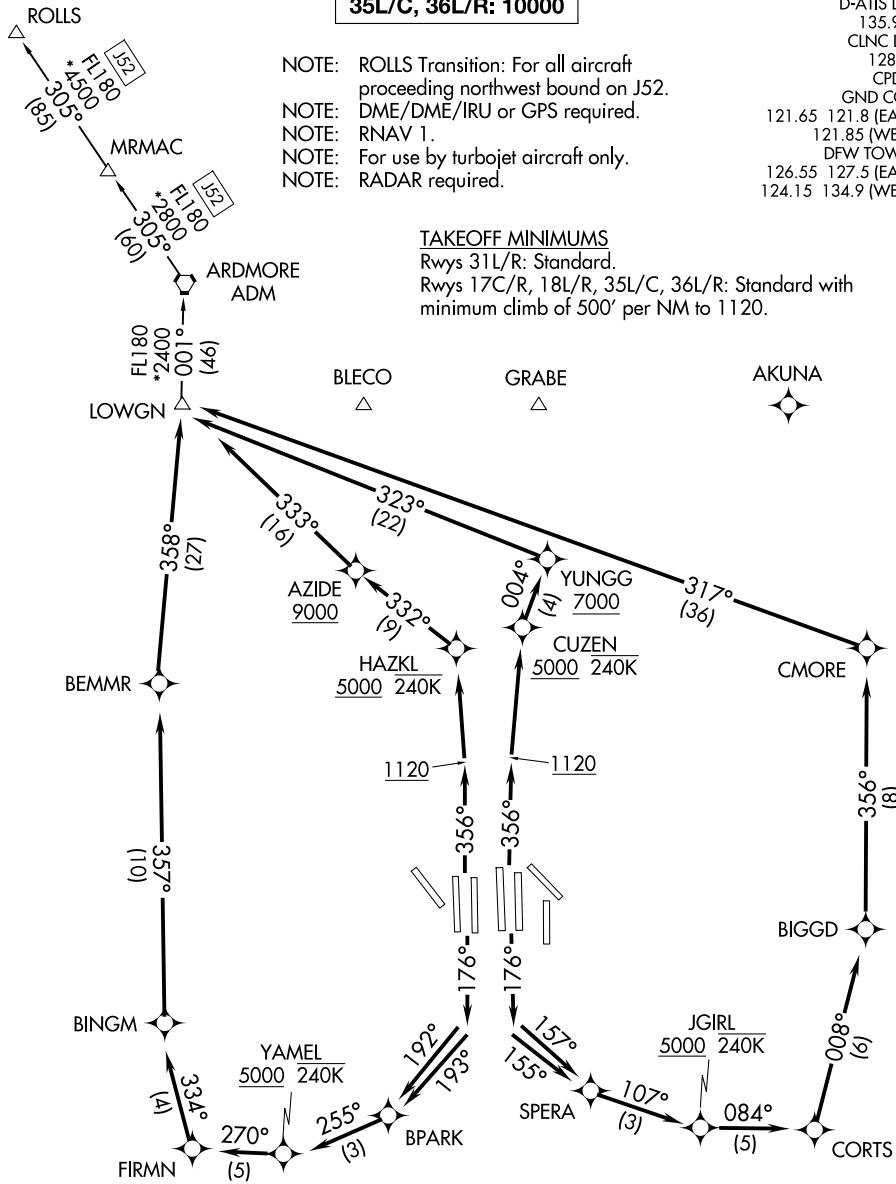
LONE STAR DEP CON  
 118.55 290.35 (Rwys 17R/C)  
 126.47 363.15 (Rwys 18L/R)  
 125.12 353.95 (Rwys 35L/C and 36L/R)  
 D-ATIS DEP  
 135.925  
 CLNC DEL  
 128.25  
 CPDLC  
 GND CON  
 121.65 121.8 (EAST)  
 121.85 (WEST)  
 DFW TOWER  
 126.55 127.5 (EAST)  
 124.15 134.9 (WEST)

- NOTE: ROLLS Transition: For all aircraft proceeding northwest bound on J52.  
 NOTE: DME/DME/IRU or GPS required.  
 NOTE: RNAV 1.  
 NOTE: For use by turbojet aircraft only.  
 NOTE: RADAR required.

**TAKEOFF MINIMUMS**  
 Rwys 31L/R: Standard.  
 Rwys 17C/R, 18L/R, 35L/C, 36L/R: Standard with minimum climb of 500' per NM to 1120.

SC-2, 19 MAR 2026 to 16 APR 2026

SC-2, 19 MAR 2026 to 16 APR 2026



NOTE: Chart not to scale.

(CONTINUED ON FOLLOWING PAGE)

LOWGN EIGHT DEPARTURE (RNAV)