

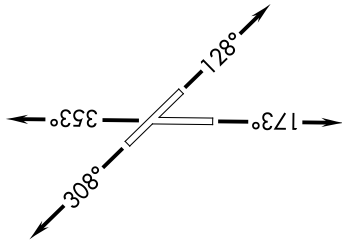
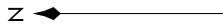
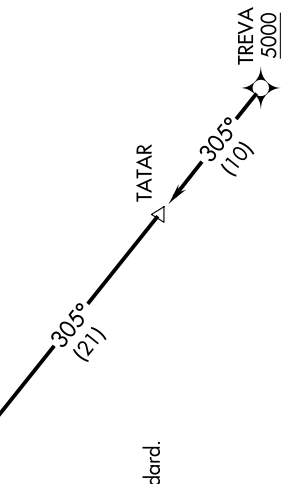
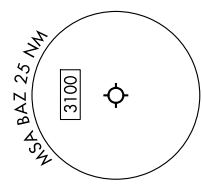
# ALISS SEVEN DEPARTURE (RNAV)

SC-3, 19 MAR 2026 to 16 APR 2026

**TOP ALTITUDE:  
ASSIGNED BY ATC**

RNAV 1 - DME/DME/IRU or GPS.  
RADAR required for non-GPS equipped aircraft.  
RADAR required.

SAN ANTONIO DEP CON  
128.05 290.225  
ATIS  
119.325  
CLNC DEL  
134.75  
CLNC DEL (When twr closed)  
134.75  
GND CON  
120.175  
NEW BRAUNFELS TOWER ★  
127.05 285.4



**▼ DEPARTURE ROUTE DESCRIPTION**

**TAKEOFF RUNWAY 13:** Climb on heading 128° or as assigned by ATC, for vectors to TREVA, thence. . .

**TAKEOFF RUNWAY 17:** Climb on heading 173° or as assigned by ATC, for vectors to TREVA, thence. . .

**TAKEOFF RUNWAY 31:** Climb on heading 308° or as assigned by ATC, for vectors to TREVA, thence. . .

**TAKEOFF RUNWAY 35:** Climb on heading 353° or as assigned by ATC, for vectors to TREVA, thence. . .

. . . on track 305° to TATAR, then on track 305° to ALISS. Maintain ATC assigned altitude. Expect filed altitude 10 minutes after departure.

NOTE: Chart not to scale.

# ALISS SEVEN DEPARTURE (RNAV)

SC-3, 19 MAR 2026 to 16 APR 2026