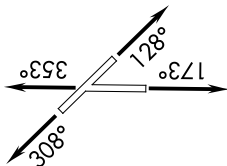


SNIDR TWO DEPARTURE (RNAV)

SC-3, 19 MAR 2026 to 16 APR 2026

SAN ANTONIO DEP CON
128.05 290.225
ATIS
119.325
CINC DEL
134.75
CINC DEL (When tower closed)
134.75
GND CON
120.175
NEW BRAUNFELS TOWER ★
127.05 285.4

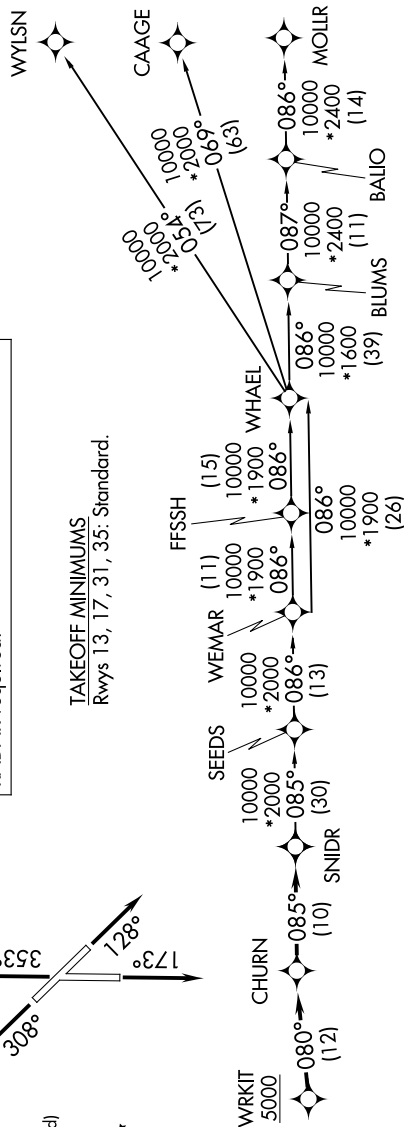


TAKEOFF MINIMUMS
Rwys 13, 17, 31, 35: Standard.

**TOP ALTITUDE:
ASSIGNED BY ATC**

RNAV 1 - DME/DME/IRU or GPS.

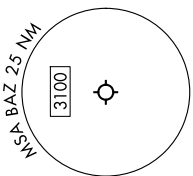
RADAR required for non-GPS equipped aircraft.
RADAR required.



DEPARTURE ROUTE DESCRIPTION

▼ **TAKEOFF RUNWAY 13:** Climb on heading 128° or as assigned by ATC, for vectors to WRKIT, thence...
TAKEOFF RUNWAY 17: Climb on heading 173° or as assigned by ATC, for vectors to WRKIT, thence...
TAKEOFF RUNWAY 31: Climb on heading 308° or as assigned by ATC, for vectors to WRKIT, thence...
TAKEOFF RUNWAY 35: Climb on heading 353° or as assigned by ATC, for vectors to WRKIT, thence...
 ... on track 080° to CHURN, then on track 085° to SNIDR. Expect filed altitude 10 minutes after departure.

- BLUMS TRANSITION (SNIDR2.BLUMS)
- CAAGE TRANSITION (SNIDR2.CAAGE)
- FFSSH TRANSITION (SNIDR2.FFSSH)
- MOLLR TRANSITION (SNIDR2.MOLLR)
- SEEDS TRANSITION (SNIDR2.SEEDS)
- WEMAR TRANSITION (SNIDR2.WEMAR)
- WHAEL TRANSITION (SNIDR2.WHAEL)
- WYLSN TRANSITION (SNIDR2.WYLSN)



NOTE: Chart not to scale.

SC-3, 19 MAR 2026 to 16 APR 2026

SNIDR TWO DEPARTURE (RNAV)