

(YODUH2.YODUH) 25219

AL-6080 (FAA)

NEW BRAUNFELS NTL (BAZ)  
NEW BRAUNFELS, TEXAS

# YODUH TWO DEPARTURE (RNAV)

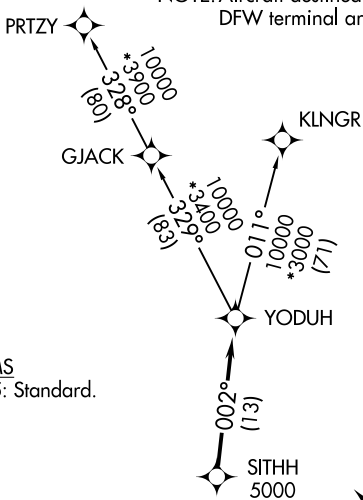
SAN ANTONIO DEP CON  
128.05 290.225  
ATIS  
119.325  
CLNC DEL  
134.75  
CLNC DEL (When twr closed)  
134.75  
GND CON  
120.175  
NEW BRAUNFELS TOWER \*  
127.05 285.4

RNAV 1 - DME/DME IRU or GPS.

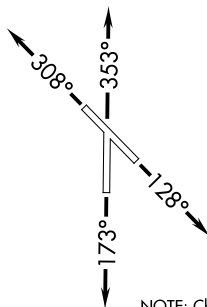
RADAR required for non-GPS equipped aircraft.  
RADAR required.

**TOP ALTITUDE:  
ASSIGNED BY ATC**

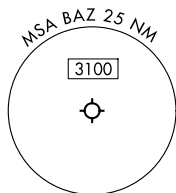
NOTE: Aircraft destined for airports north/northeast of DFW terminal area must file the KLNGR Transition.



TAKEOFF MINIMUMS  
Rwys 13, 17, 31, 35: Standard.



NOTE: Chart not to scale.



SC-3, 19 MAR 2026 to 16 APR 2026

SC-3, 19 MAR 2026 to 16 APR 2026

## DEPARTURE ROUTE DESCRIPTION

TAKEOFF RUNWAY 13: Climb on heading 128° or as assigned by ATC, for vectors to SITHH, thence. . .

TAKEOFF RUNWAY 17: Climb on heading 173° or as assigned by ATC, for vectors to SITHH, thence. . .

TAKEOFF RUNWAY 31: Climb on heading 308° or as assigned by ATC, for vectors to SITHH, thence. . .

TAKEOFF RUNWAY 35: Climb on heading 353° or as assigned by ATC, for vectors to SITHH, thence. . .

. . .on track 002° to YODUH, then on transition. Maintain ATC assigned altitude. Expect filed altitude 10 minutes after departure.

KLNGR TRANSITION (YODUH2.KLNGR)  
PRTZY TRANSITION (YODUH2.PRTZY)

YODUH TWO DEPARTURE (RNAV)  
(YODUH2.YODUH) 07AUG25

NEW BRAUNFELS, TEXAS  
NEW BRAUNFELS NTL (BAZ)