
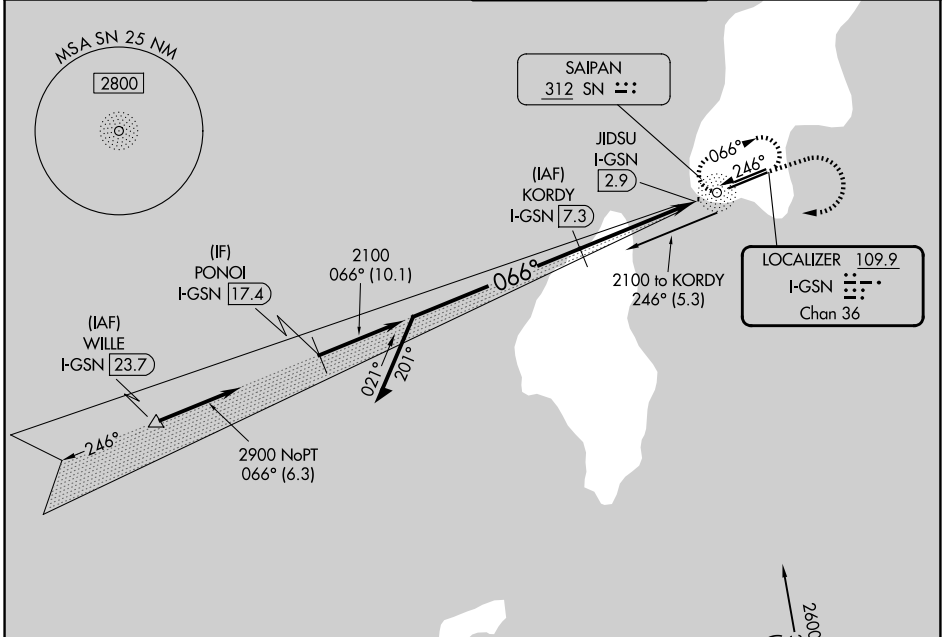


LOC/DME I-GSN 109.9 Chan 36	APP CRS 066°	Rwy Ldg 8010 TDZE 215 Apt Elev 215
---	------------------------	---

ILS or LOC RWY 7
FRANCISCO C ADA/SAIPAN INTL (GSN)(PGSN)

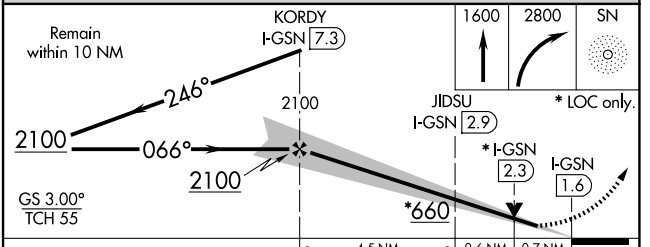
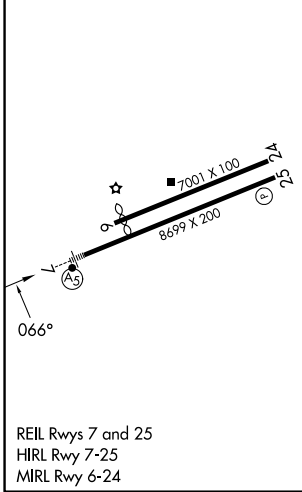
NA Circling NA north of Rwy 6-24. ADF and DME required.	MALSR 	MISSED APPROACH: Climb to 1600 then climbing right turn to 2800 direct SN NDB and hold.
--	---	--

ATIS 127.2	GUAM CERAP 118.4 290.5	SAIPAN TOWER 125.7 256.9	GND CON 121.8
-----------------------------	---	---	--------------------------------



ELEV 215	D	TDZE 215
-----------------	----------	-----------------

DME REQUIRED



CATEGORY	A	B	C	D
S-ILS 7		415-1/2	200 (200-1/2)	
S-LOC 7		480-1/2	265 (300-1/2)	
CIRCLING	720-1	505 (600-1)	720-1 1/2 505 (600-1 1/2)	780-2 565 (600-2)

PAC, 19 MAR 2026 to 14 MAY 2026

PAC, 19 MAR 2026 to 14 MAY 2026