

NDB SN <b>312</b>	APP CRS <b>246°</b>	Rwy Ldg 8010
		TDZE 210
		Apt Elev 215

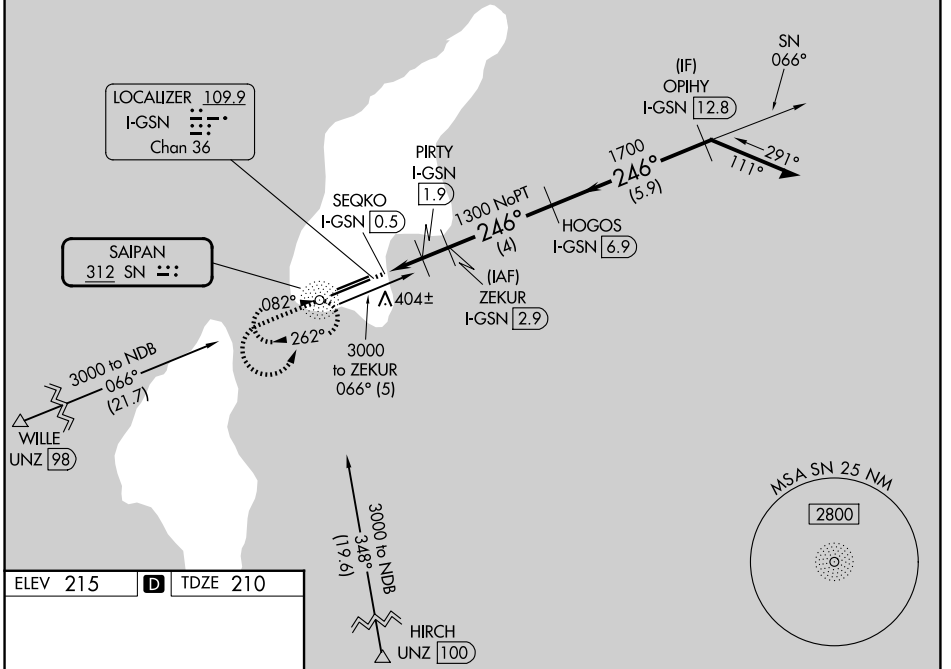
# NDB RWY 25

FRANCISCO C ADA/SAIPAN INTL (GSN)(PGSN)

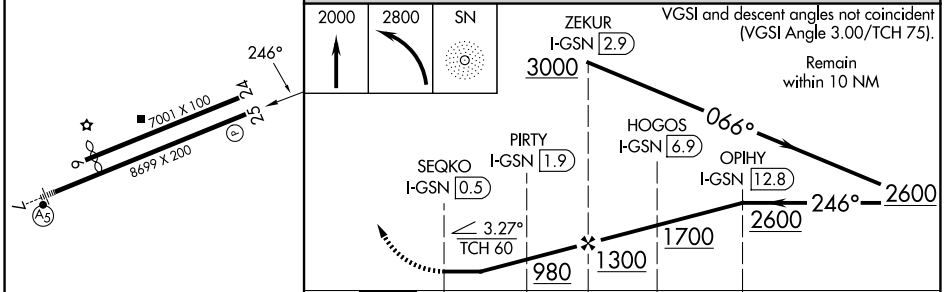
<p><b>▼</b> Circling NA north of Rwy 6-24. Rwy 25 helicopter visibility reduction below ¼ SM NA. DME required.</p>	<p>MISSED APPROACH: Climb to 2000 then climbing left turn to 2800 direct SN NDB and hold.</p>
--	---

<p>ATIS <b>127.2</b></p>	<p>GUAM CERAP <b>118.4 290.5</b></p>	<p>SAIPAN TOWER <b>125.7 256.9</b></p>	<p>GND CON <b>121.8</b></p>
------------------------------	--	--	---------------------------------

## DME REQUIRED



ELEV 215	<b>D</b>	TDZE 210
----------	----------	----------



CATEGORY	A	B	C	D
S-25	720-1	510 (600-1)	720-1⅓	510 (600-1⅓)
CIRCLING	720-1	505 (600-1)	720-1½	780-2 565 (600-2)

REIL Rwy 7 and 25  
HIRL Rwy 7-25  
MIRL Rwy 6-24

SAIPAN ISLAND, MP  
Amdt 3A 03JAN19

FRANCISCO C ADA/SAIPAN INTL (GSN)(PGSN)

15°07'N-145°44'E

# NDB RWY 25

PAC, 19 MAR 2026 to 14 MAY 2026

PAC, 19 MAR 2026 to 14 MAY 2026